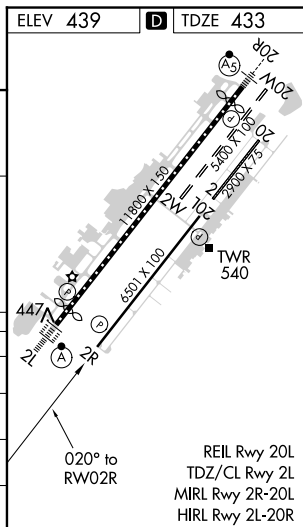
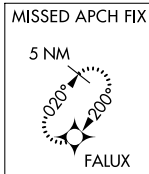



RNAV (GPS) RWY 2R
FAIRBANKS INTL (FAI) (PAFA)

MISSED APPROACH: Climb to 4900 direct FALUX and hold, continue climb-in-hold to 4900.

CLNC DEL
127.6

CATEGORY	A	B	C	D
LPV DA		683-7 $\frac{7}{8}$	250 (300-7 $\frac{7}{8}$)	
LNAV/ VNAV DA		731-1	298 (300-1)	
LNAV MDA		800-1	367 (400-1)	
 CIRCLING	880-1 441 (500-1)	900-1 461 (500-1)	900-1 $\frac{1}{2}$ 461 (500-1 $\frac{1}{2}$)	1020-2 581 (600-2)

AK, 31 DEC 2020 to 25 FEB 2021