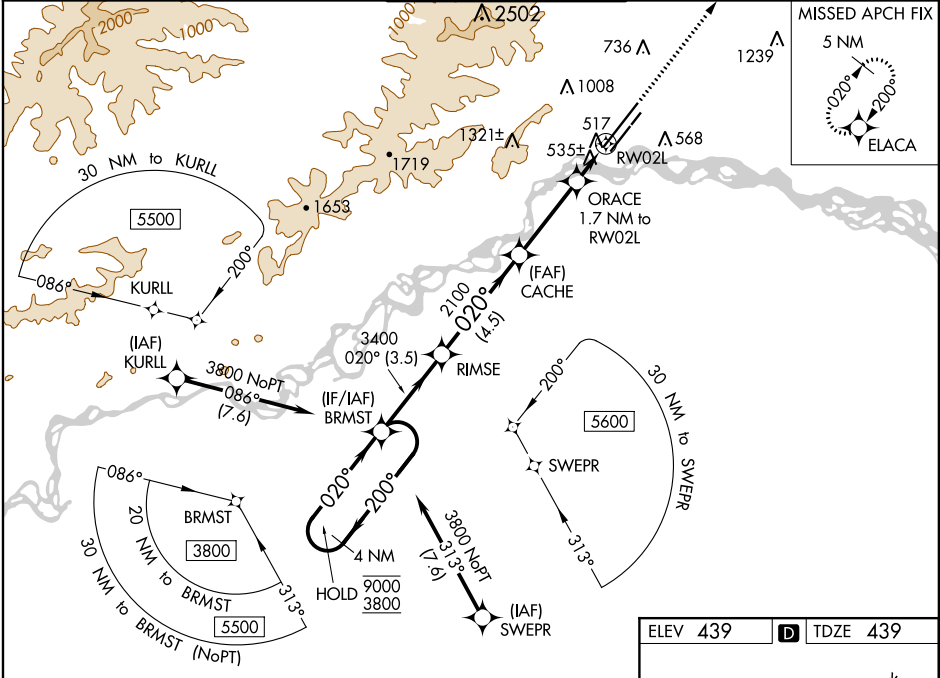


WAAS CH 57915 W02B	APP CRS 020°	Rwy Idg 11050 TDZE 439 Apt Elev 439
--	------------------------	--

RNAV (GPS) Y RWY 2L
FAIRBANKS INTL (FAI) (PAFA)

RNP APCH.	ALSIF-2	MISSED APPROACH: Climb to 4900 direct ELACA and hold, continue climb-in hold to 4900.
-32°C Circling NA west of Rwy 2L-20R. Circling NA to Rwy 2W and 20W. For uncompensated Baro-VNAV systems, LNAV/VNAV NA below -19°C or above 54°C. For inop ALS, increase LNAV/VNAV all Cats visibility to RVR 4500 and LNAV Cat C/D visibility to RVR 5500.		

ATIS 124.4	FAIRBANKS APP CON 125.35 363.2	FAIRBANKS TOWER 118.3 257.8	GND CON 121.9	CLNC DEL 127.6
----------------------	--	---------------------------------------	-------------------------	--------------------------



4 NM Holding Pattern		VGSI and RNAV glidepath not coincident (VGSI Angle 3.00/TCH 73).		4900	ELACA
		BRMST	RIMSE	CACHE	ORACE
9000 3800		200° 020°	020° 3400	2100	1.7 NM to RW02L
GP 3.00° TCH 56					*LNAV only
		3.5 NM	4.5 NM	3.4 NM	*0.9 NM to RW02L
					*1020
					RW02L
CATEGORY	A	B	C	D	
LPV DA	639/18		200 (200-½)		
LNAV/VNAV DA	720/24		281 (300-½)		
LNAV MDA	800/24	361 (400-½)	800/40	361 (400-¾)	
CIRCLING	880-1 441 (500-1)	900-1 461 (500-1)	900-1½ 461 (500-1½)	1020-2 581 (600-2)	

