

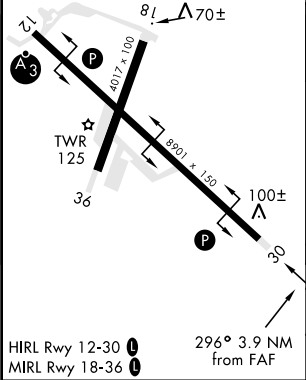
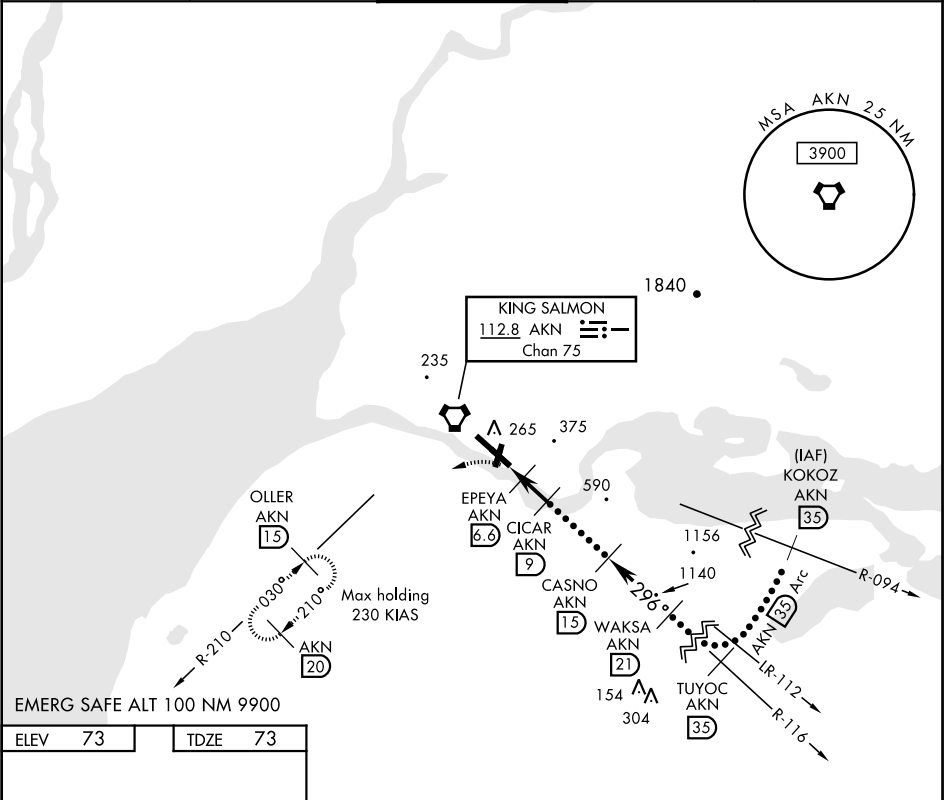
KING SALMON, ALASKA

HI-VOR/DME or TACAN RWY 30

VORTAC AKN 112.8 Chan 75	APCH CRS 296°	Rwy Idg TDZE 73 Arprt Elev 73	JAL-1237 [USAF]	KING SALMON (PAKN)
--	-------------------------	---	-----------------	--------------------

MISSED APPROACH: Climb to 500, then climbing left turn to 3000 via heading 222° and AKN VORTAC R-210 to OLLER/ AKN 1.5 DME and hold.

ATIS 128.8	ANCHORAGE CENTER 124.8 354.0	KING SALMON TOWER★ 118.3 279.5	GND CON 121.9	CTAF 121.9 352.05
----------------------	--	--	-------------------------	-----------------------------



500	3000	Intcp AKN R-210	OLLER AKN 15	TUYOC R-116 35			KOKOZ R-094 35
↑	hdg 222°			CASNO 15	WAKSA 21		
VORTAC		EPEYA 6.6	CICAR 9	296°	5700	12,000	
		5.1	600	1400	3100	4800	
		1.5 NM	2.4 NM	3.13° TCH 41			
CATEGORY	C		D		E		
S-30	420-1 347 (400-1)		420-1½		347 (400-1½)		
CIRCLING	580-1½ 507 (600-1½)		640-2 567 (600-2)		720-2½ 647 (800-2½)		

KING SALMON, ALASKA 58°41'N-156°39'W KING SALMON (PAKN)

Amdt 4 19171

HI-VOR/DME or TACAN RWY 30