

VORTAC AKN	APP CRS	Rwy Idg	8501
112.8	116°	TDZE	62
Chan 75		Apt Elev	73

VOR or TACAN RWY 12

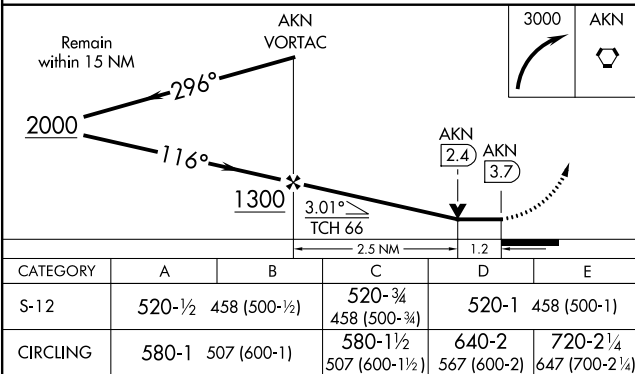
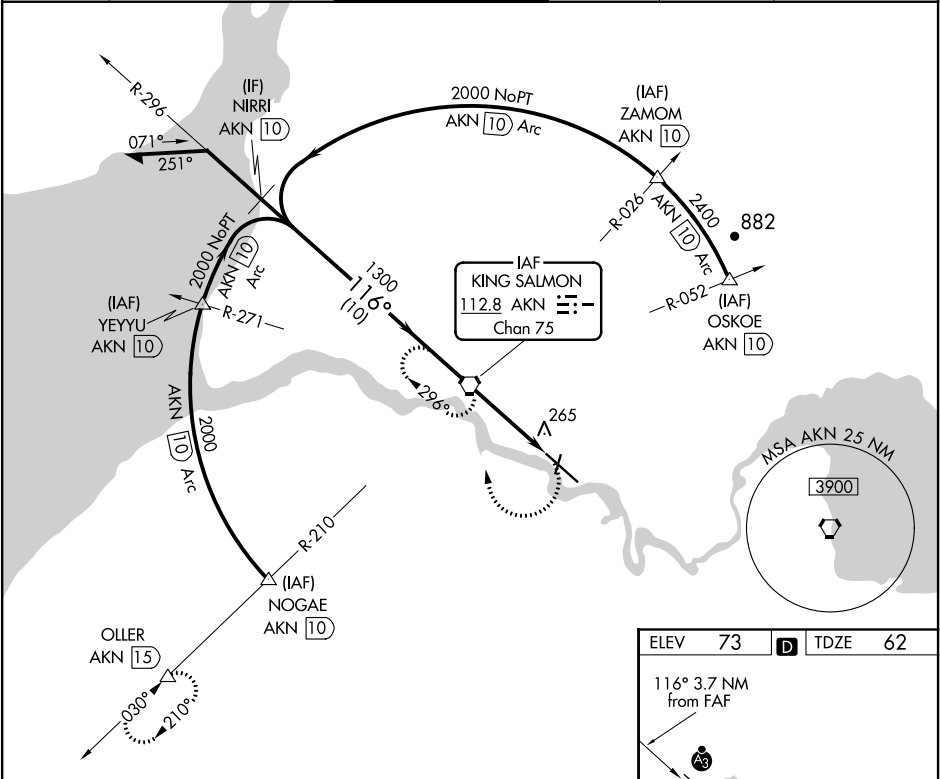
KING SALMON (AKN)(PAKN)

For inop ALSF, increase Cat E visibility to 1½ mile.

SSALR

MISSED APPROACH: Climbing right turn to 3000 direct AKN VORTAC and hold, continue climb-in-hold to 3000. (TACAN AIRCRAFT: Climbing right turn to 3000 via heading 238° and AKN VORTAC R-210 to OLLER 15 DME and hold SW, right turn, 030° inbound.)

ATIS 128.8	ANCHORAGE CENTER 124.8 354.0	KING SALMON TOWER★ 118.3 279.5	GND CON 121.9	UNICOM 122.95	CTAF 121.9 352.05
---------------	---------------------------------	-----------------------------------	------------------	------------------	----------------------



ELEV 73	TDZE 62
116° 3.7 NM from FAF	
3000 AKN	
4017 X 100	
4000 X 500	
8901 X 150	
NW 36	
SW 36	
SE 36	
NE 36	
MIRL Rwy 18-36	
HIRL Rwy 12-30	
FAF to MAP 3.7 NM	
Knots	60 90 120 150 180
Min:Sec	3:42 2:28 1:51 1:29 1:14