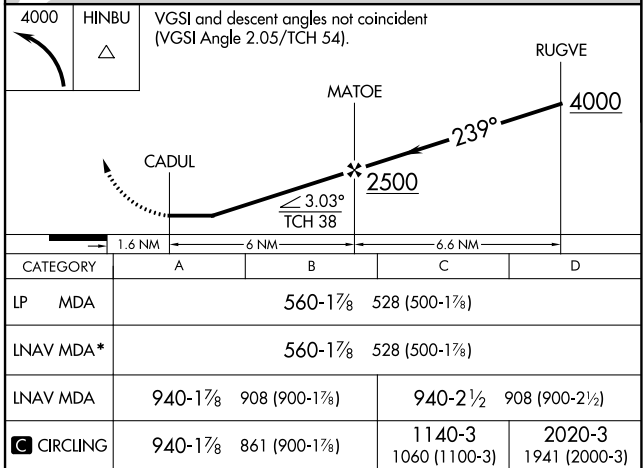


20366

RNAV (GPS) RWY 26
KODIAK (ADQ)(PADQ)

MISSED APPROACH: (Do not exceed 210K until HINBU)
Climbing left turn to 4000 direct HINBU and hold, continue climb-in-hold to 4000. *Missed approach requires minimum climb of 357 feet per NM to 1500.

- MISSED APPROACH:** (Do not exceed 210K until HINBU)
Climbing left turn to 4000 direct HINBU and hold, continue climb-in-hold to 4000. *Missed approach requires minimum climb of 357 feet per NM to 1500.



KODIAK (ADQ)(PADQ)
RNAV (GPS) RWY 26

AK, 31 DEC 2020 to 25 FEB 2021