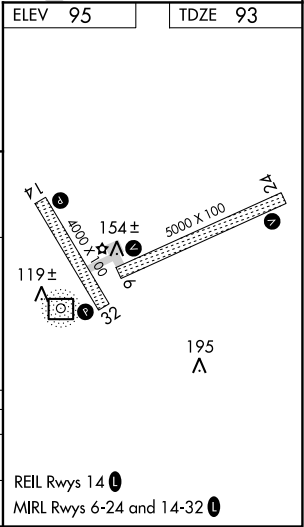
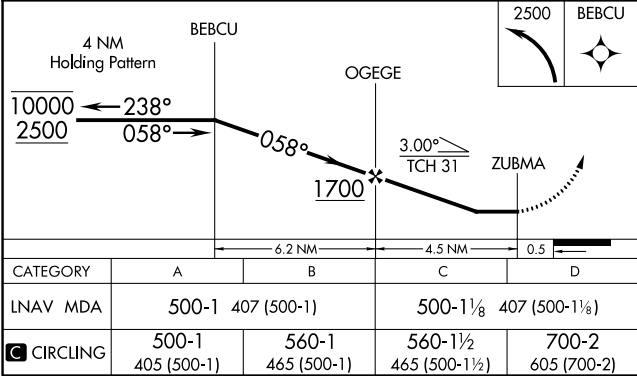
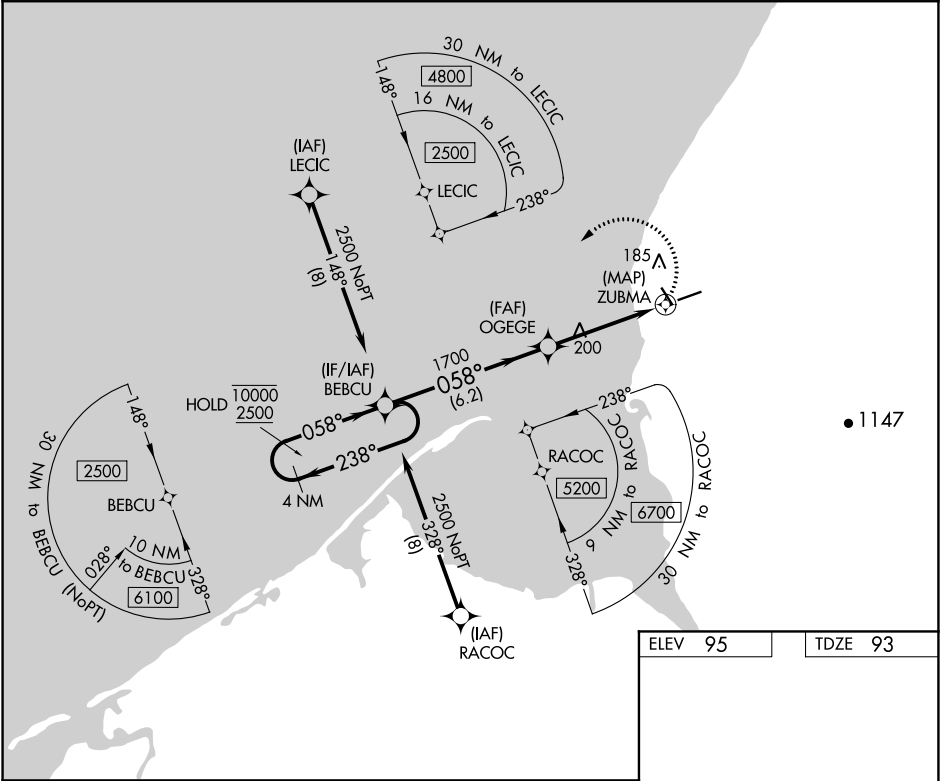


APP CRS	Rwy Idg	5000
058°	TDZE	93
	Apt Elev	95

RNAV (GPS) RWY 6
PORT HEIDEN (PTH)(PAPH)

RNP APCH.	MISSED APPROACH: Climbing left turn to 2500 direct BEBCU and hold.
<div>▼ ▲</div> Rwy 6 helicopter visibility reduction below 1 SM NA.	

AWOS-3P 124.4	ANCHORAGE CENTER 132.9 288.3	CTAF 122.8 0
------------------	---------------------------------	-----------------



AK, 31 DEC 2020 to 25 FEB 2021

AK, 31 DEC 2020 to 25 FEB 2021