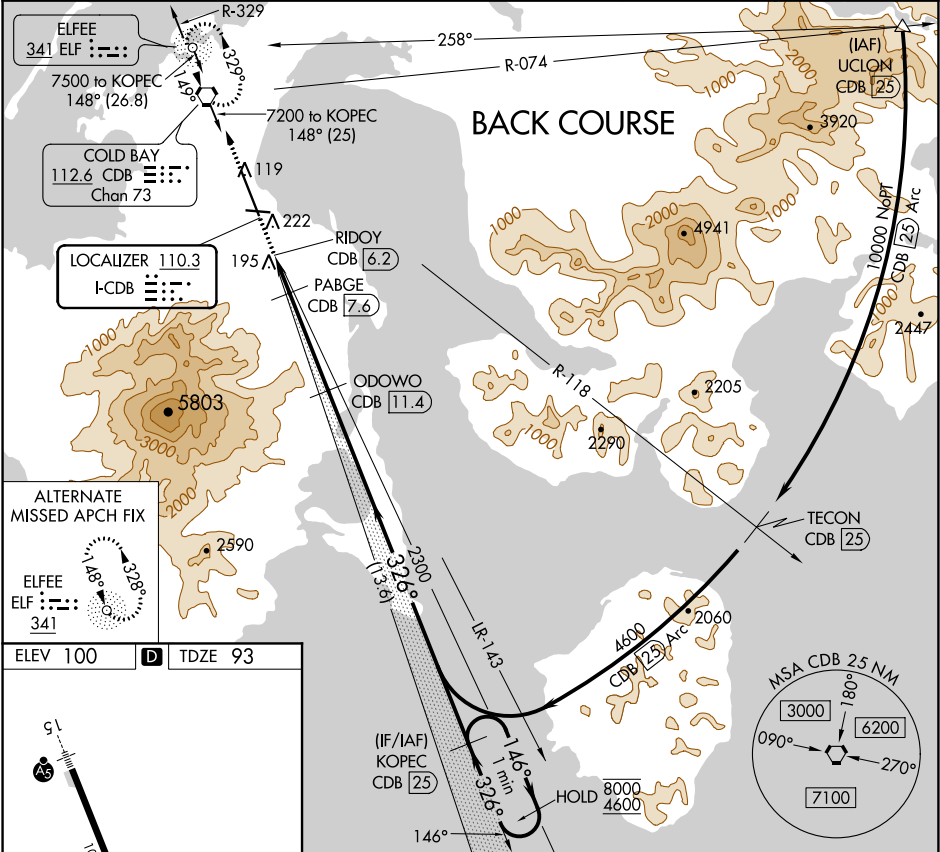


LOC I-CDB 110.3	APP CRS 326°	Rwy Idg TDZE 93 Apt Elev 100
---------------------------	------------------------	--

LOC BC RWY 33
COLD BAY (CDB) (PACD)

DME required.	MISSED APPROACH: Climb to 4000 direct CDB VORTAC and hold, continue climb-in-hold to 4000.
Circling NA for Cat A southwest of Rwy 15-33 at night. DME from CDB VORTAC. Simultaneous reception of I-CDB and CDB DME required. Circling NA for Cats B/C/D southwest of Rwy 15-33.	

ASOS 135.75	ANCHORAGE CENTER 118.5 278.3	COLD BAY RADIO 123.6 (CTAF) 0
-----------------------	--	---



	4000 CDB		VGSI and descent angles not coincident (VGSI Angle 3.00/TCH 36).		KOPEC CDB 25		One Minute Holding Pattern	
					ODOWO CDB 11.4		146° → 8000 ← 326° 4600	
	PABGE CDB 7.6		3.00° TCH 55		326°		Disregard GS indications. Localizer unusable inside CDB VORTAC 6.2 DME.	
	RIDOY CDB 6.2		1100		2300			
	1.5 NM		1.5 NM		3.8 NM		13.6 NM	
CATEGORY	A		B		C		D	
S-33			420-1 7/8		327 (400-1 7/8)			
CIRCLING	540-1 7/8 440 (500-1 7/8)		560-1 7/8 460 (500-1 7/8)		860-2 1/2 760 (800-2 1/2)			

AK, 31 DEC 2020 to 25 FEB 2021

AK, 31 DEC 2020 to 25 FEB 2021