

VORTAC CDB	APP CRS	Rwy Idg	10179
112.6	145°	TDZE	75
Chan 73		Apt Elev	100

VOR RWY 15
COLD BAY (CDB) (PACD)

DME required.

⚠ Circling NA for Cat A southwest of Rwy 15-33 at night.
DME values will decrease then increase prior to reaching missed approach point. For inop ALS, increase S-15 Cats C and D visibility to RVR 6000. Circling NA for Cats B/C/D southwest of Rwy 15-33

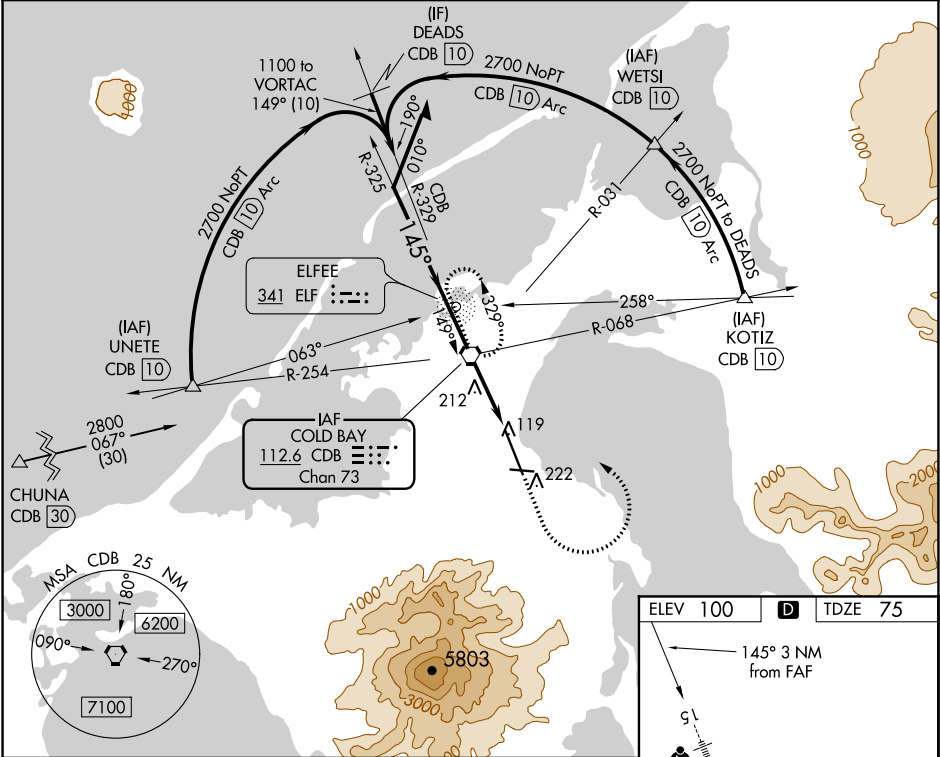
MALSR

⬆

A5

MISSED APPROACH: Climb to 1200 then climbing left turn to 2700 direct CDB VORTAC and hold; continue climb-in-hold to 2700.

ASOS 135.75	ANCHORAGE CENTER 118.5 278.3	COLD BAY RADIO★ 123.6 (CTAF) 1
----------------	---------------------------------	-----------------------------------



Remain within 10 NM

2700

325°

145°

1100

3.10 TCH 50

1.7 NM

1.3 NM

CDB VORTAC

1200

2700

CDB

CDB 1.7

CDB 3

10179 X 150

4900 X 150

33

112±

CATEGORY	A	B	C	D
S-15	480/24	405 (400-½)	480/40	405 (400-¾)
CIRCLING	540-1 440 (500-1)	560-1 460 (500-1)	560-1½ 460 (500-1½)	860-2½ 760 (800-2½)

HIREL all Rwy 1

AK, 31 DEC 2020 to 25 FEB 2021

AK, 31 DEC 2020 to 25 FEB 2021