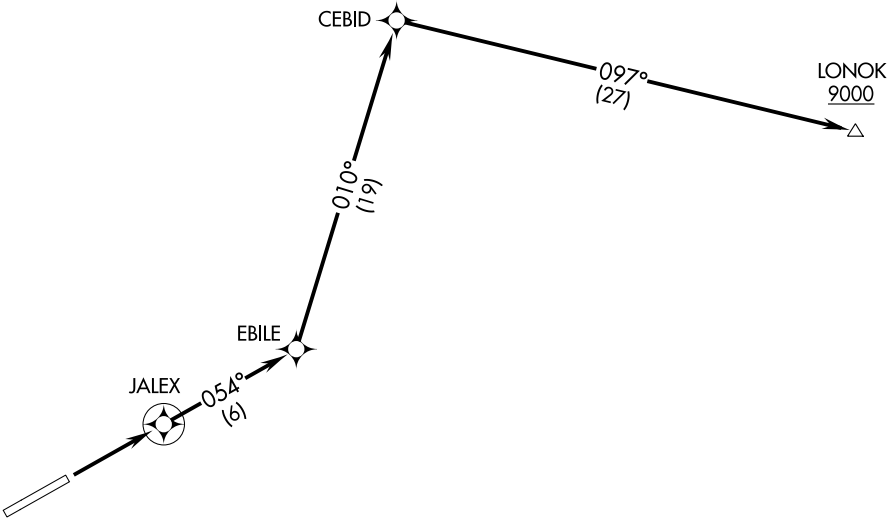


ANCHORAGE CENTER
126.4 254.3
CTAF
122.9

TOP ALTITUDE:
ASSIGNED BY ATC



NOTE: GPS required.
NOTE: RNAV 1.

TAKEOFF MINIMUMS
Rwy 23: NA-ATC.
Rwy 5: Standard with minimum climb of 253' per NM to 900.

NOTE: Chart not to scale.

DEPARTURE ROUTE DESCRIPTION

TAKEOFF RUNWAY 5: Climb to 9000 or ATC assigned higher altitude direct JALEX then on track 054° to EBILE, then on track 010° to CEBID, then on track 097° to cross LONOK at or above 9000 before proceeding on course.