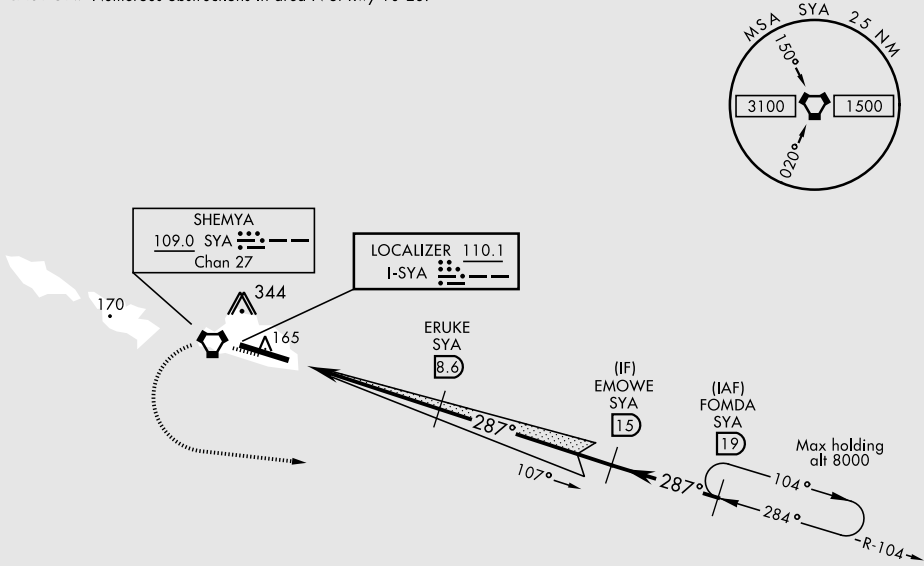


ILS or LOC/DME RWY 28

LOC I-SYA <b>110.1</b>	APCH CRS <b>287°</b>	Rwy ldg <b>10,004</b> TDZE <b>88</b> Arpt Elev <b>98</b>	AL-1246 [USAF]	EARECKSON AS (PASY)
* When ALS inop, increase CAT AB vis to 1 mile, CAT CDE vis to 1 1/2 miles. ** Circling Not Authorized in area N of Rwy 10-28.			SALS 	MISSED APPROACH: Climb to 600, then climbing left turn to 3000, intercept SYA R-104 direct FOMDA and hold.
ANCHORAGE CENTER <b>119.1 339.8</b>	CTAF <b>127.2 0 352.05 0</b>		ASOS <b>135.65</b>	

CAUTION: Numerous obstructions in area N of Rwy 10-28.



EMERG SAFE ALT 100 NM 5200

600

3000

VGSI and ILS Glidepath not coincident (VGSI angle 2.50/TCH 46).

VORTAC

JAKEG 3.5

ERUKE 8.6

EMOWE 15

FOMDA SYA R-104 19

3000

2500

1700

GS 2.50° TCH 51

8 NM

5.1 NM

CATEGORY	A	B	C	D	E
S-ILS 28	288-3/4		200	(200-3/4)	
S-LOC 28*	500-3/4	412 (500-3/4)	500-1 412 (500-1)		
CIRCLING**	500-1	560-1	560-1 1/2	660-2	
	402 (500-1)	462 (500-1)	462 (500-1 1/2)	562 (600-2)	

ELEV 98

TDZE 88

P

A1

TWR

A2

P

10,004 x 150

287° 5.9 NM from FAF

ILS or LOC/DME RWY 28

AK, 31 DEC 2020 to 25 FEB 2021

AK, 31 DEC 2020 to 25 FEB 2021