

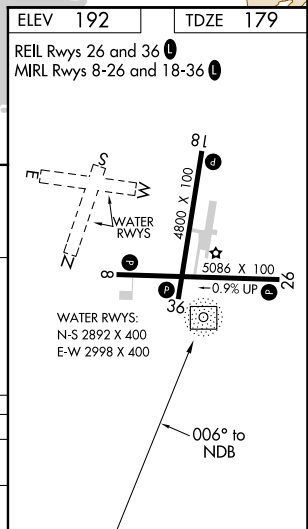
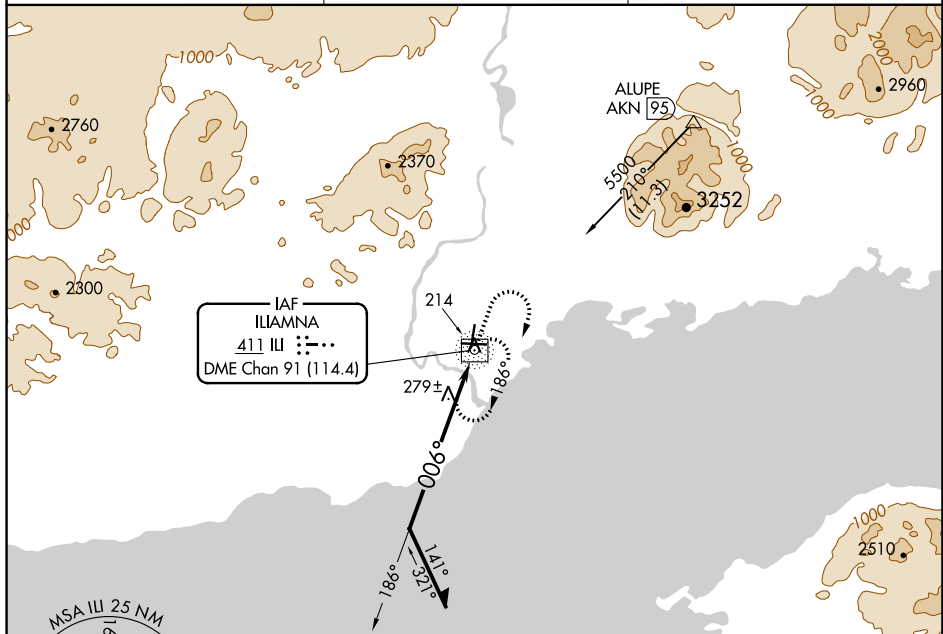
20254

NDB RWY 36
ILIAMNA (ILI) (PAIL)

Circling Rwy 18 NA at night.
Rwy 36 helicopter visibility reduction
below $\frac{3}{4}$ SM NA.

MISSED APPROACH: Climb to 1100 then climbing right turn to 3000 via heading 186° then climbing right turn to 4800 direct ILLI NDB/DME and hold, continue climb-in-hold to 4800. When authorized by ATC, climb-in-hold to 7000.

AFIS 134.95	ANCHORAGE CENTER 118.8	ILIAMNA RADIO 123.6 (CTAF) 0
-----------------------	----------------------------------	---



CATEGORY	A	B	C	D
S-36	680-1	501 (500-1)	680-1½	501 (500-1½)
C CIRCLING	740-1	548 (600-1)	800-1¾ 608 (700-1¾)	1700-3 1508 (1600-3)

ILIAMNA (ILI) (PAIL)
NDB RWY 36

AK, 31 DEC 2020 to 25 FEB 2021

AK, 31 DEC 2020 to 25 FEB 2021