

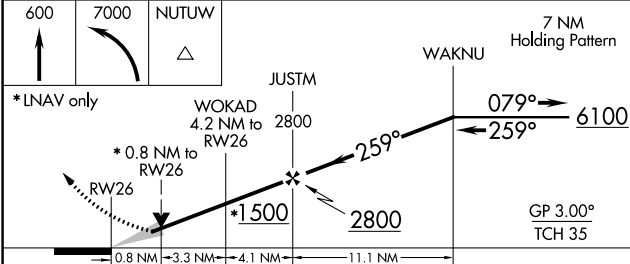
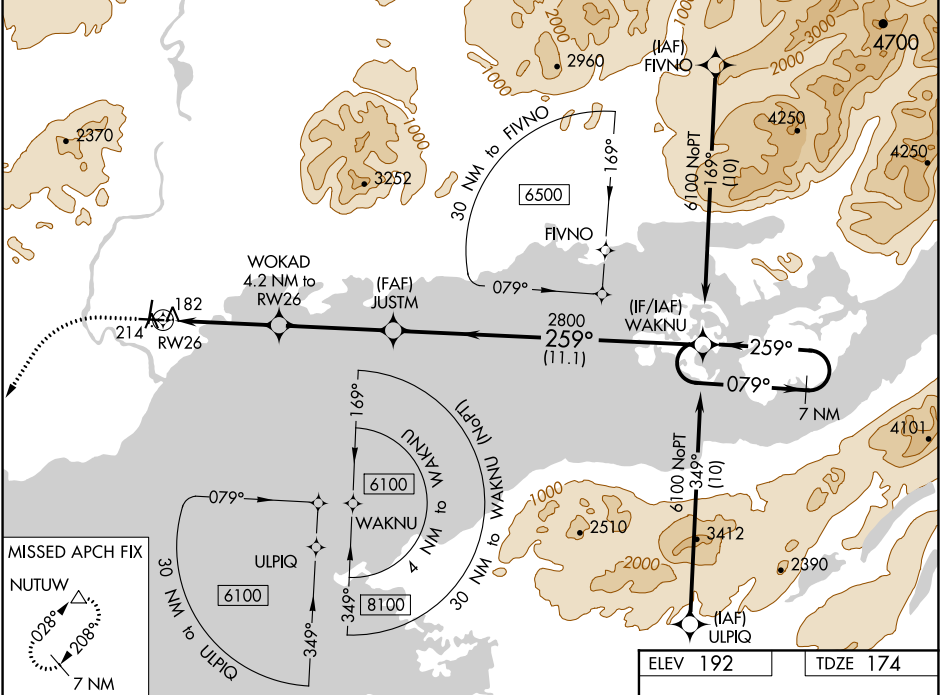
WAAS CH 45910 W26A	APP CRS 259°	Rwy Idg TDZE 174 Apt Elev 192
--	------------------------	---

RNAV (GPS) RWY 26

ILIAMNA (ILI) (PAIL)

<div><div><div></div><div></div><div></div></div><div><div></div><div></div><div></div></div></div> <div>For uncompensated Baro-VNAV systems, LNAV/VNAV NA below -21°C (-5° F) or above 54°C (130°F). When local altimeter setting not received, procedure NA. DME/DME RNP-0.3 NA.</div>	MISSED APPROACH: Climb to 600, then climbing left turn to 7000 direct NUTUW and hold, continue climb-in-hold to 7000.
--	---

AFIS 134.95	ANCHORAGE CENTER 118.8	ILIAMNA RADIO 123.6 (CTAF) 0
-----------------------	----------------------------------	--



CATEGORY	A	B	C	D
LPV DA	424-1	250 (300-1)		
LNAV/VNAV DA	424-1	250 (300-1)		
LNAV MDA	440-1	266 (300-1)		
CIRCLING	740-1 548 (600-1)	800-1¾ 608 (700-1¾)	1700-3 1508 (1600-3)	

ELEV 192 TDZE 174

600

7000

NUTUW

*LNAV only

WOKAD 4.2 NM to RW26

JUSTM 2800

WAKNU 6100

GP 3.00° TCH 35

81

4800 X 100

5086 X 100

36

259° to RW26

-0.9% UP

WATER RWYS:

N-S 2892 X 400

E-W 2998 X 400

REIL Rwy 26 and 36 0 MIRL Rwy 8-26 and 18-36 0