

LOC/DME I-UNK <b>111.3</b> Chan <b>50</b>	APP CRS <b>150°</b>	Rwy Idg <b>5900</b> TDZE <b>27</b> Apt Elev <b>27</b>
---	------------------------	---

LOC RWY 15

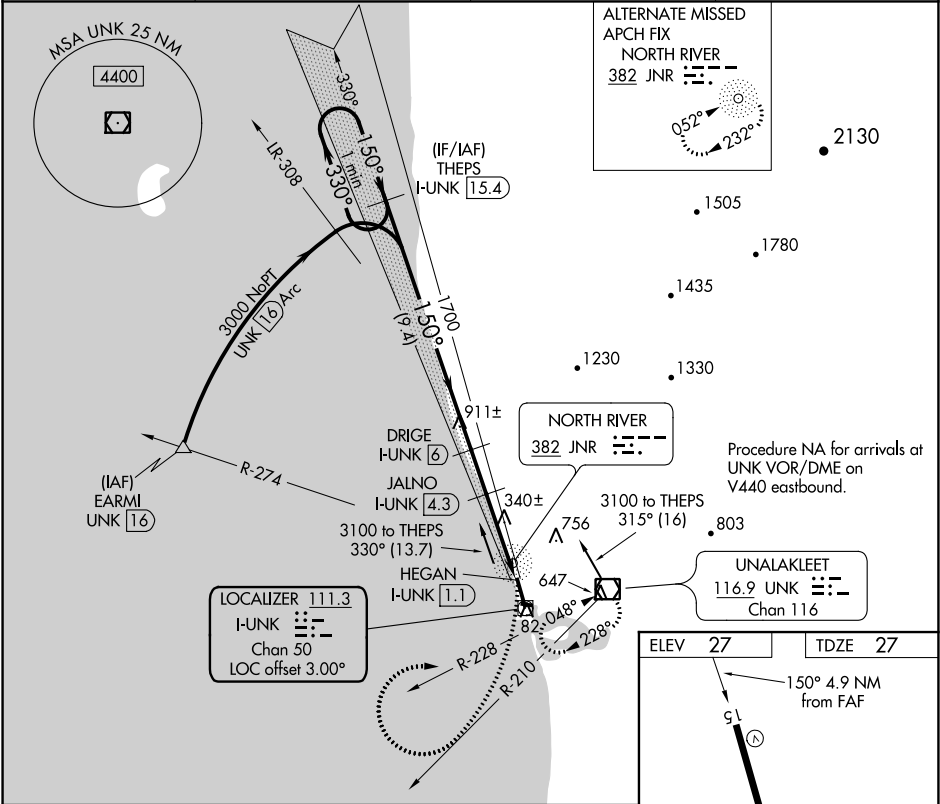
UNALAKLEET (UNK)(PAUN)

DME required.

Circling NA east of Rwy 15-33. Circling Rwy 9 NA at night. Rwy 15 helicopter visibility reduction below ¾ SM NA.

MISSED APPROACH: Climbing right turn to 3000 on UNK VOR/DME R-210 then right turn direct UNK VOR/DME and hold.

AWOS-3P <b>132.25</b>	ANCHORAGE CENTER <b>135.7 335.5</b>	NOME RADIO <b>122.3</b>	CTAF <b>123.0</b>
--------------------------	--	----------------------------	----------------------



One Minute Holding Pattern		THEPS I-UNK 15.4		3000 UNK R-210		UNK	
3000		330° 150°		150°		1700	
Use I-UNK DME when on the localizer course.		DRIGE I-UNK 6		3.13° TCH 39		JALNO I-UNK 4.3	
		1140		I-UNK 2.8		HEGAN I-UNK 1.1	
		9.4 NM		1.7 NM		1.5 NM 1.7 NM	
CATEGORY	A	B	C	D			
S-15	600-1	573 (600-1)	600-1½	573 (600-1½)			
CIRCLING	600-1 573 (600-1)	700-1 673 (700-1)	700-2 673 (700-2)	860-2¾ 833 (900-2¾)			

