

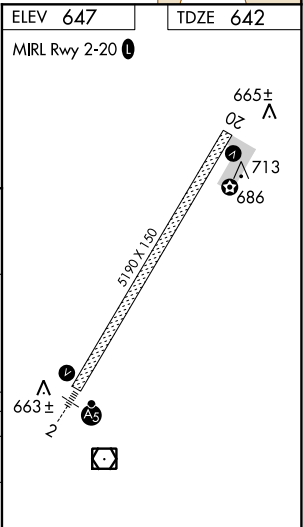
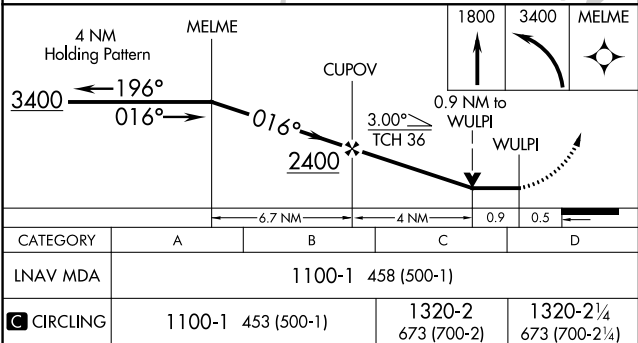
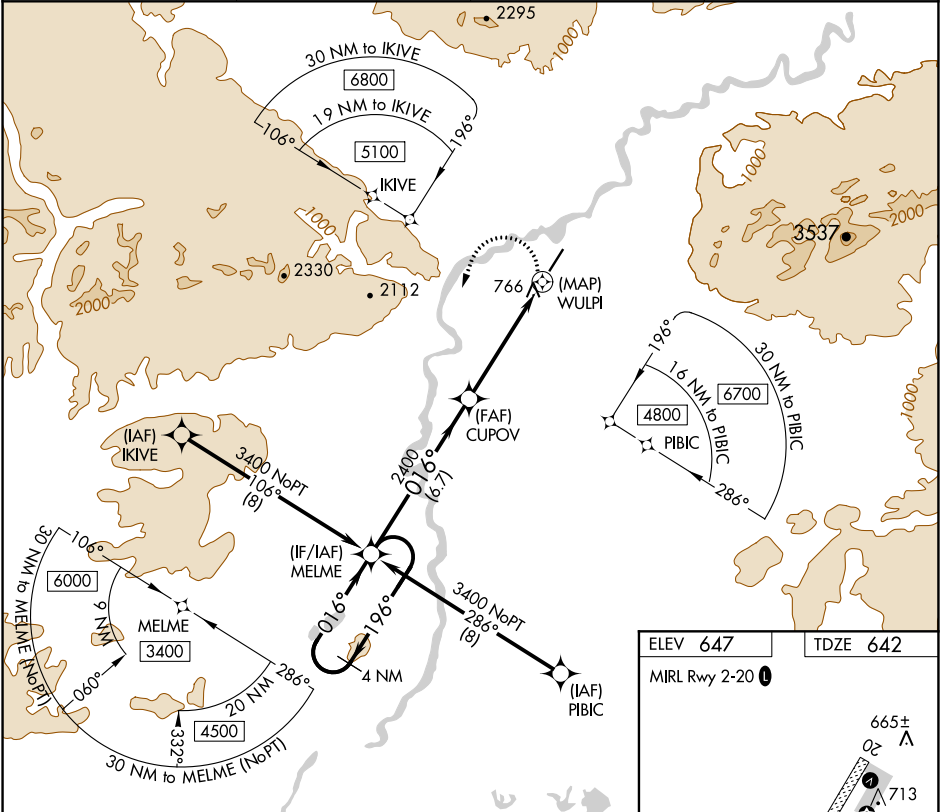
APP CRS	Rwy Idg	5190
016°	TDZE	642
	Apt Elev	647

RNAV (GPS) RWY 2

BETTLES(BTT)(PABT)

RNP APCH.	MALSR	MISSED APPROACH: (Do not exceed 230K until MELME) Climb to 1800 then climbing left turn to 3400 direct MELME and hold.
Inoperative table does not apply. Circling NA east of Rwy 2-20. For inop ALS, increase Cat C/D visibility to 1 3/4 SM. Rwy 2 helicopter visibility reduction below 3/4 SM NA.		

ASOS	ANCHORAGE CENTER	FAIRBANKS RADIO	CTAF
135.45	124.6 352.0	122.2	122.9 0



AK, 31 DEC 2020 to 25 FEB 2021

AK, 31 DEC 2020 to 25 FEB 2021