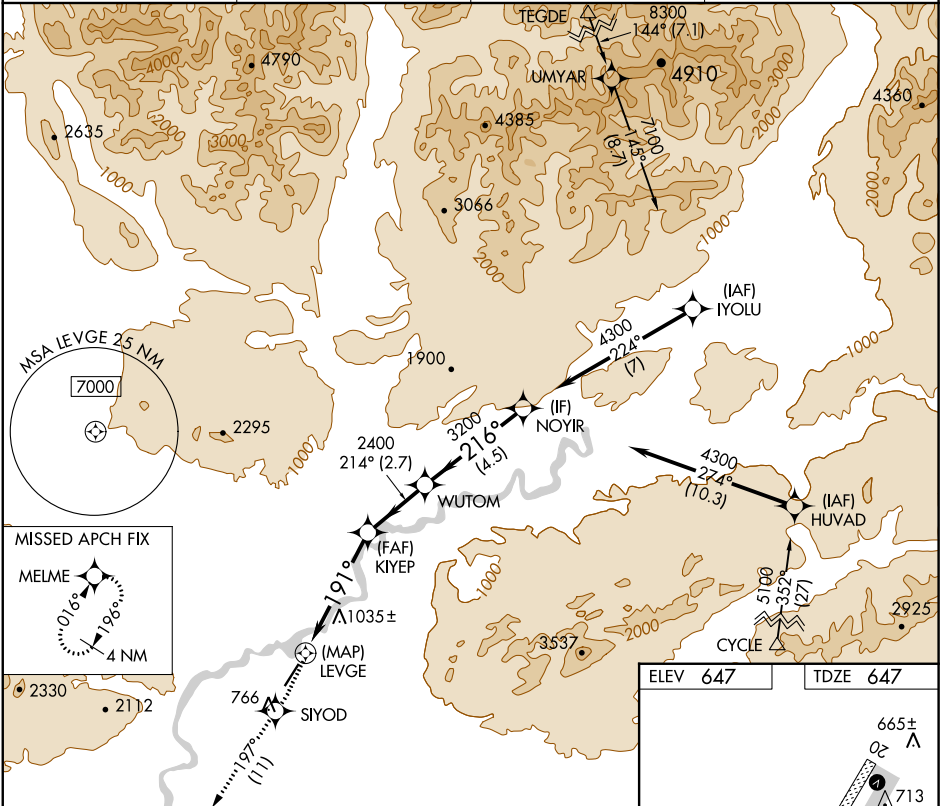


APP CRS	Rwy Idg	5190
191°	TDZE	647
	Apt Elev	647

RNAV (GPS) RWY 20  
BETTLES(BTT)(PABT)

RNP APCH.	MISSED APPROACH: Climb to 3200 direct SIYOD and on track 197° to MELME and hold.
Circling NA east of Rwy 2-20. Rwy 20 helicopter visibility reduction below 3/4 SM NA. -45°C	

ASOS 135.45	ANCHORAGE CENTER 124.6 352.0	FAIRBANKS RADIO 122.2	CTAF 122.9 0
----------------	---------------------------------	--------------------------	-----------------



3200	SIYOD	tr 197°	MELME		
1.4 NM to LEVGE ≤ 3.00° TCH 52					
LEVGE					
KIYEP					
WUTOM					
NOYIR					
4300					
2400					
3200					
191°					
214°					
216°					
0.4 1.4 NM 3.5 NM 2.7 NM 4.5 NM					
CATEGORY	A	B	C	D	
LNNAV MDA	1300-1 653 (700-1)	1300-1 653 (700-1)	1300-1 653 (700-1)	1300-1 653 (700-1)	
CIRCLING	1300-1 653 (700-1)	1320-2 673 (700-2)	1320-2 673 (700-2)	1320-2 673 (700-2)	

