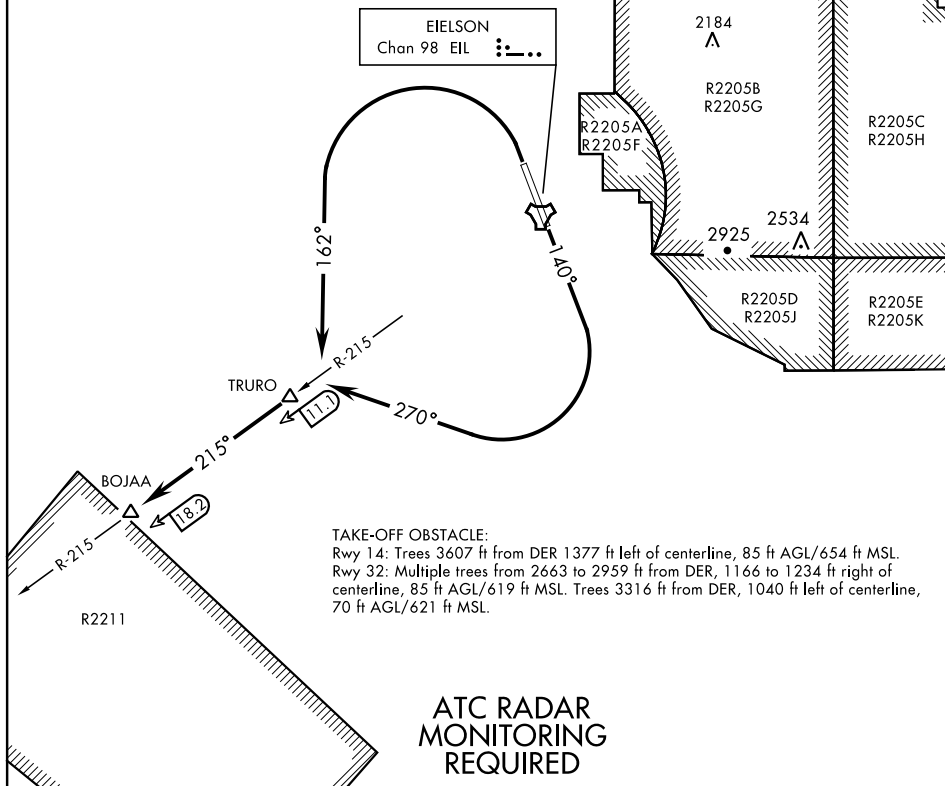


ATIS ★ 119.9 273.5
CLNC DEL
343.7
GND CON
121.8 275.8
EIELSON TOWER ★
127.2 352.05
FAIRBANKS DEP CON
127.1 338.275

SL-1729 [USAF]



DEPARTURE ROUTE DESCRIPTION

TAKE-OFF RWY 14: Climb heading 140° to 1100, then climbing right turn to heading 270°, intercept EIL TACAN R-215 outbound to BOJAA. Climb and maintain 3700 or assigned altitude.

TAKE-OFF RWY 32: Climbing left turn to heading 162° to TRURO then continue outbound on EIL TACAN R-215 to BOJAA. Maintain at or above 3700 or assigned altitude.

BOJAA TWO DEPARTURE (BOJAA2•BOJAA)

Orig 26MAR20

FAIRBANKS, ALASKA
EIELSON AFB (PAEI)

AK, 31 DEC 2020 to 25 FEB 2021