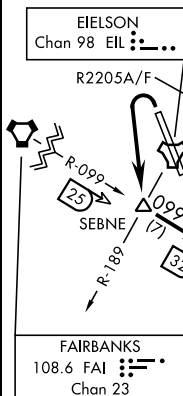


## DELTA-SIX DEPARTURE

SH-1729 [USAF]

FAIRBANKS, ALASKA

ATIS ★ 119.9 273.5  
CLINC DEL  
343.7  
EIELSON GND CON  
121.8 275.8  
EIELSON TOWER ★  
127.2 352.05  
FAIRBANKS DEP CON  
127.1 338.275

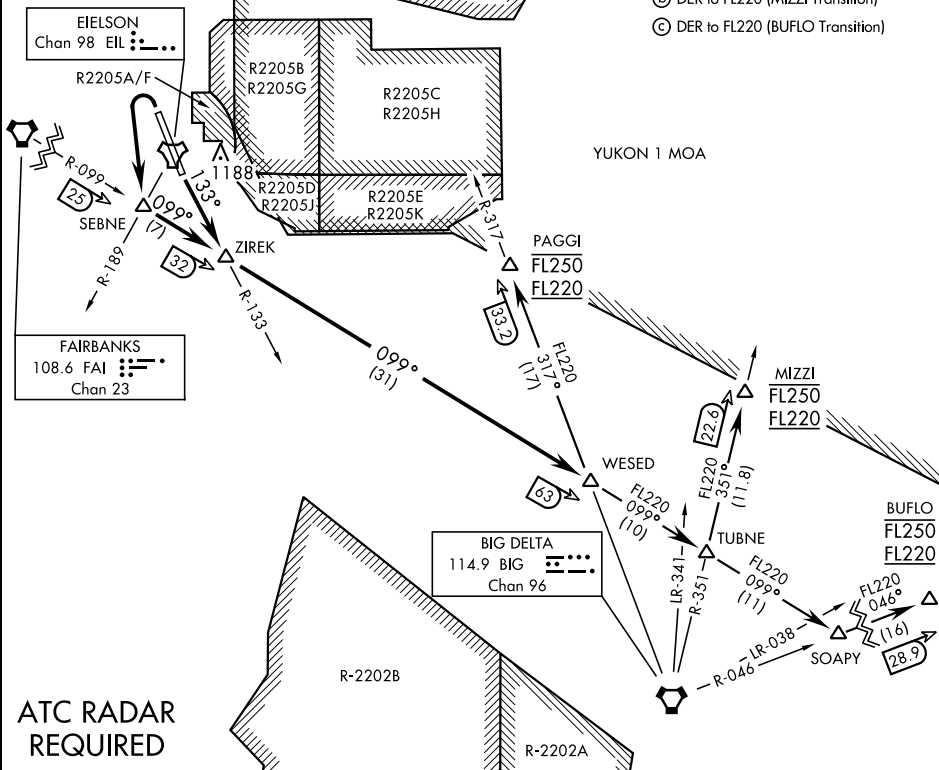


ATC RADAR  
REQUIRED

Rwy	Knots	60	120	180	240	300	360
4/32Ⓐ	V/V(fpm)	444	888	1332	1776	2220	2664
4/32Ⓑ	V/V(fpm)	410	820	1230	1640	2050	2460
4/32Ⓒ	V/V(fpm)	303	606	909	1212	1515	1818

ATC Climb Rate

- Ⓐ DER to FL220 (PAGGI Transition)
- Ⓑ DER to FL220 (MIZZI Transition)
- Ⓒ DER to FL220 (BUFLO Transition)



## DEPARTURE ROUTE DESCRIPTION

TAKE-OFF RWY 14 (DELTA6 • ZIREK): Intercept EIL TACAN R-133 to join FAI VORTAC R-099 at ZIREK and track outbound. Thence. . .

TAKE-OFF RWY 32 (DELTA6 • ZIREK): Turn left to intercept FAI VORTAC R-099 at SEBNE. Proceed outbound direct ZIREK. Thence. . .

BUFLO GATE TRANSITION (DELTA6 • BUFLO): Turn left at SOAPY and track outbound on BIG VORTAC R-046 to BUFLO. Cross BUFLO at FL220 block FL250.

MIZZI GATE TRANSITION (DELTA6 • MIZZI): Turn left at TUBNE and track outbound on BIG VORTAC R-351 to MIZZI. Cross MIZZI at FL220 block FL250.

PAGGI GATE TRANSITION (DELTA6 • PAGGI): Turn left at WESED and track outbound on BIG VORTAC R-317 to PAGGI. Cross PAGGI at FL220 block FL250.

DELTA-SIX DEPARTURE

Orig 26MAR20

FAIRBANKS, ALASKA  
EIELSON AFB (PAEI)