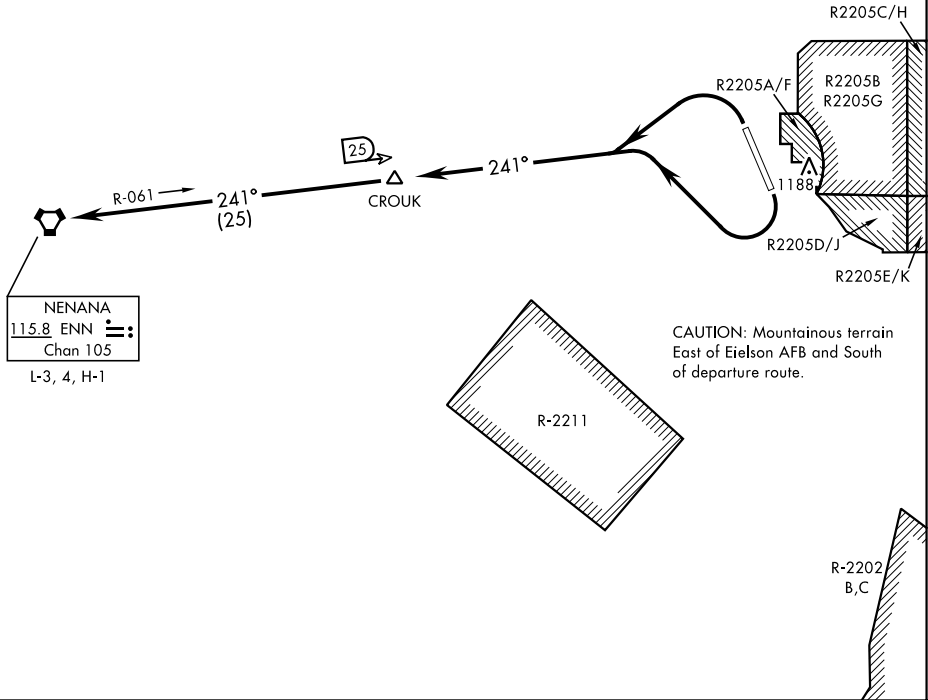


ATIS ★ 119.9 273.5  
CLNC DEL  
343.7  
EIELSON GND CON  
121.8 275.8  
EIELSON TOWER ★  
127.2 352.05  
FAIRBANKS DEP CON  
127.1 338.275



DEPARTURE ROUTE DESCRIPTION

TAKE-OFF RWY 14: Turn right to intercept ENN VORTAC R-061 and climb to assigned altitude, thence . . .

TAKE-OFF RWY 32: Turn left to intercept ENN VORTAC R-061 and climb to assigned altitude, thence . . .

Proceed to NENANA via R-061 then via assigned route.