

## WAPAX TWO DEPARTURE (WAPAX2•WAPAX) SH-1729 [USAF]

EIELSON AFB (PAEI)

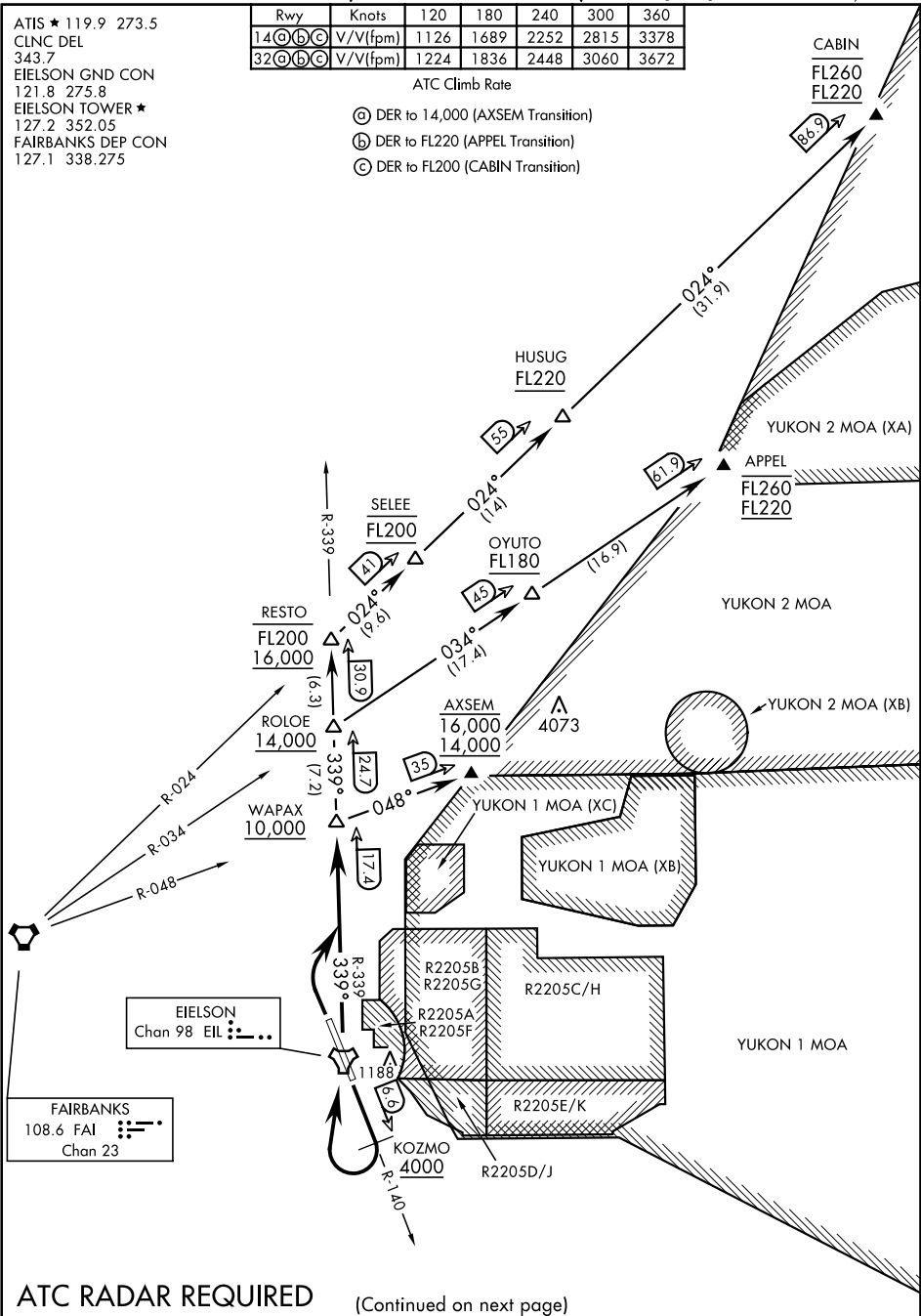
FAIRBANKS, ALASKA

ATIS ★ 119.9 273.5  
 CLNC DEL  
 343.7  
 EIELSON GND CON  
 121.8 275.8  
 EIELSON TOWER ★  
 127.2 352.05  
 FAIRBANKS DEP CON  
 127.1 338.275

Rwy	Knots	120	180	240	300	360
14 (G) (C) (C)	V/V(fpm)	1126	1689	2252	2815	3378
32 (G) (C) (C)	V/V(fpm)	1224	1836	2448	3060	3672

## ATC Climb Rate

- Ⓒ DER to 14,000 (AXSEM Transition)  
 Ⓓ DER to FL220 (APPEL Transition)  
 Ⓔ DER to FL200 (CABIN Transition)



## WAPAX TWO DEPARTURE (WAPAX2•WAPAX)

FAIRBANKS, ALASKA  
 EIELSON AFB (PAEI)