

WAAS CH <b>72939</b> <b>W04A</b>	APP CRS <b>040°</b>	Rwy Idg <b>5000</b> TDZE <b>447</b> Apt Elev <b>447</b>
--	------------------------	---

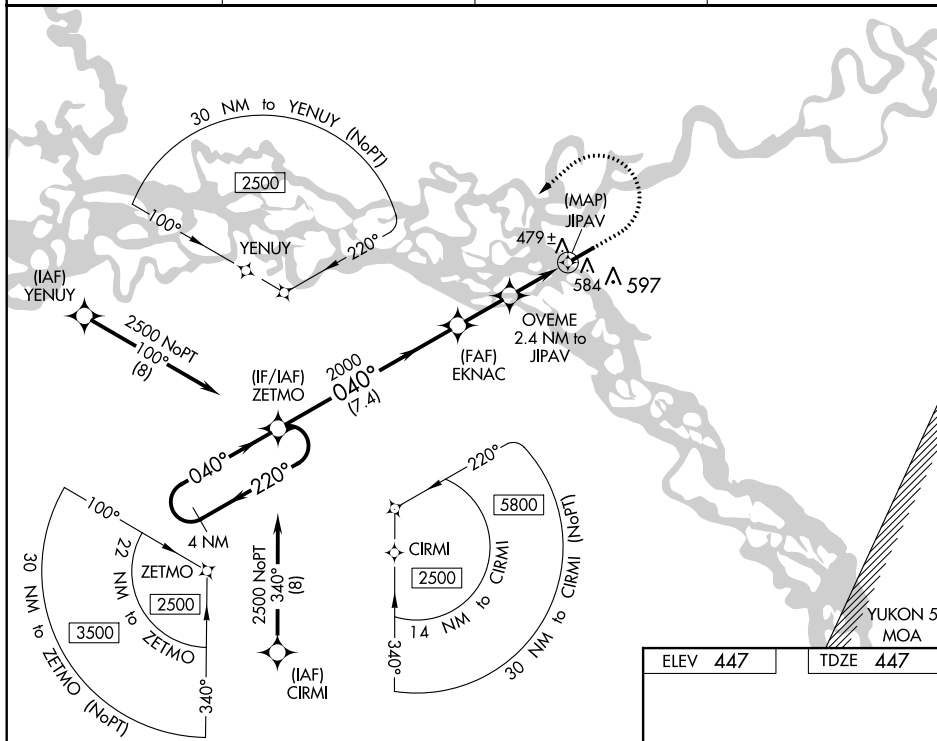
**RNAV (GPS) RWY 4**  
FORT YUKON (FYU) (PFYU)

**T**  
**-45°C**

For uncompensated Baro-VNAV systems, LNAV/VNAV NA below -20° C (-4°F) or above 54°C (130°F). Circling NA southeast of Rwy 4-22. DME/DME RNP-0.3 NA. Rwy 4 helicopter visibility reduction below 3/4 SM NA.

**MISSED APPROACH:** Climb to 1000 then climbing left turn to 2500 direct ZETMO and hold.

AWOS-3P <b>125.8</b>	ANCHORAGE CENTER <b>135.0 225.4</b>	FAIRBANKS RADIO <b>122.05</b>	CTAF <b>122.5 ①</b>
-------------------------	--	----------------------------------	------------------------



VGS and RNAV glidepath not coincident (VGS Angle 3.00/TCH 26).

4 NM Holding Pattern

ZETMO

EKNAC

OVEME 2.4 NM to JIPAV

JIPAV

GP 3.00° TCH 45

2500

220°

040°

040°

2000

1320

7.4 NM

2.1 NM

1.2 NM

1.2 NM

0.2 NM


1000

2500

ZETMO

\* LNAV only

\* 1.2 NM to JIPAV

CATEGORY	A	B	C	D
LPV DA	697-1 250 (300-1)			
INAV/ VNAV	764-1 317 (400-1)			
INAV MDA	860-1 413 (500-1)	860-1½ 413 (500-1½)		
 CIRCLING	860-1 413 (500-1)	900-1 453 (500-1)	900-1½ 453 (500-1½)	1000-2 553 (600-2)

ELEV 447

TDZE 447

1022

5000 X 100

040° to JIPAV

MIRL Rwy 4-22