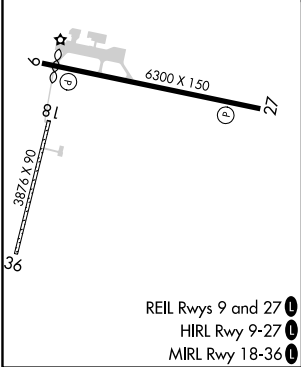
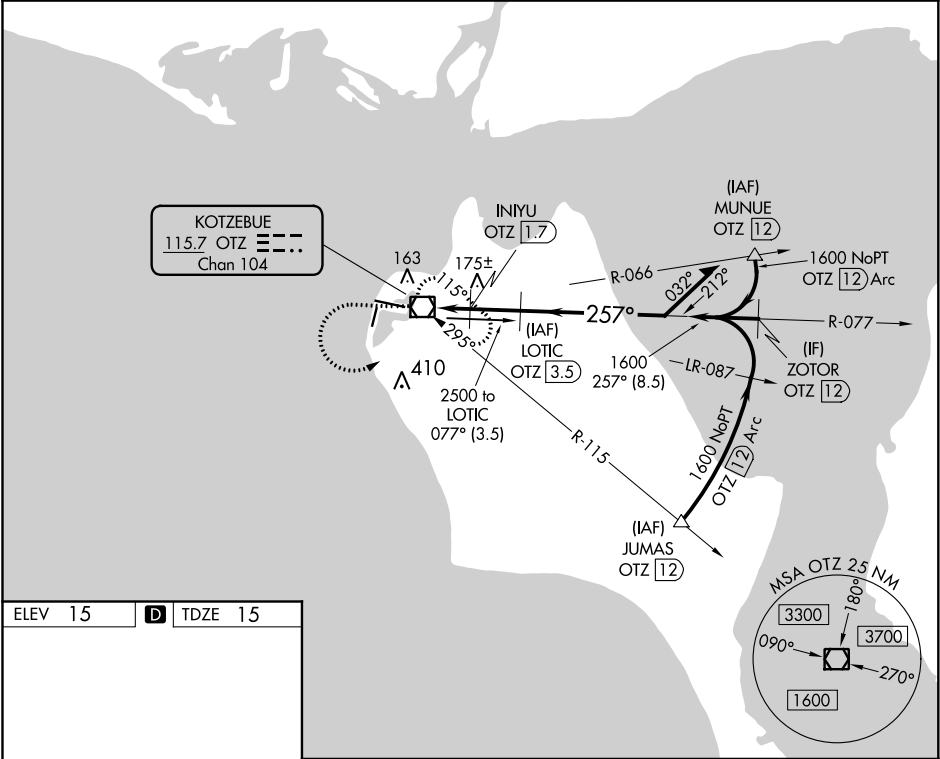


VOR/DME OTZ	APP CRS	Rwy Idg	5900
115.7	257°	TDZE	15
Chan 104		Apt Elev	15

VOR RWY 27  
RALPH WIEN MEML (OTZ) (PAOT)

DME required.	<p>⚠ Circling to Rwy 18, 36 NA at night. Rwy 27 helicopter visibility reduction below 1 SM NA. Straight-in Rwy 27 at night, Circling Rwy 27 at night, operational VGSI required, remain on or above glidepath until threshold.</p>	<p>MISSED APPROACH: Climb to 1600 then climbing left turn to 2000 direct OTZ VOR/DME and hold, continue climb-in-hold to 2000.</p>
---------------	--	--

AFIS 135.45	ANCHORAGE CENTER 119.2 263.0	KOTZEBUE RADIO 123.6 (CTAF)
----------------	---------------------------------	--------------------------------



1600	2000	OTZ	LOTIC OTZ [3.5]	Remain within 10 NM
↑	↶	⬡		
INIYU OTZ [1.7]		077°		
OTZ VOR/DME		257°		
920		1600		
0.7		1.7 NM		
1.8 NM				
CATEGORY	A	B	C	D
S-27	440-1	425 (500-1)	440-1¼	425 (500-1¼)
CIRCLING	520-1	505 (600-1)	720-2	720-2¼
			705 (800-2)	705 (800-2¼)