


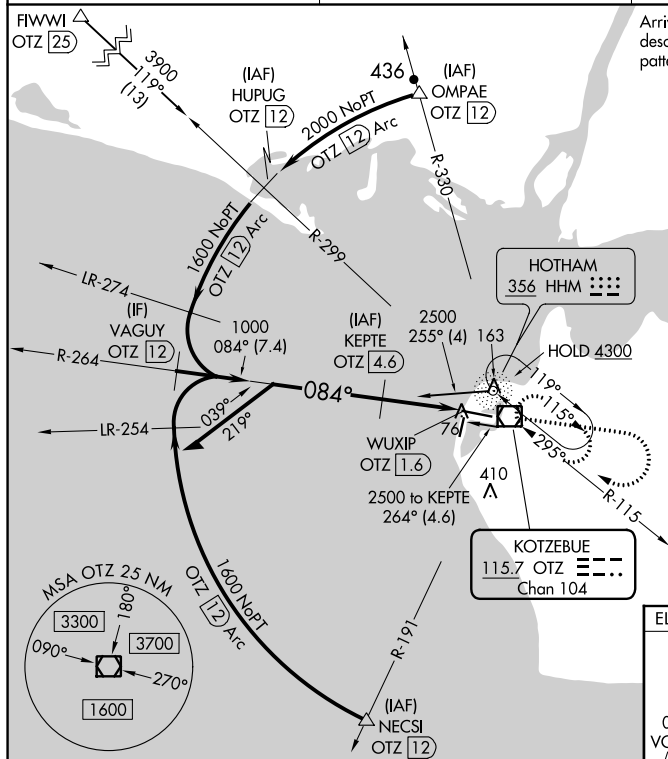


VOR RWY 9
RALPH WIEN MEML (OTZ) (PAOT)

   -44°C	Circling Rwy 18, 36 at night, Circling Rwy 27 at night, operational VGSi required, remain on or above VGSi glidepath until threshold. Rwy 9 helicopter visibility reduction below RVR 4000 NA.
---	--

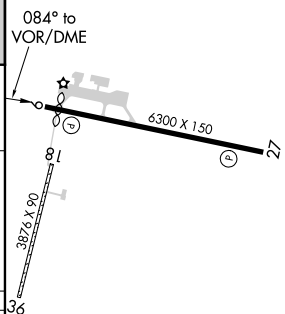
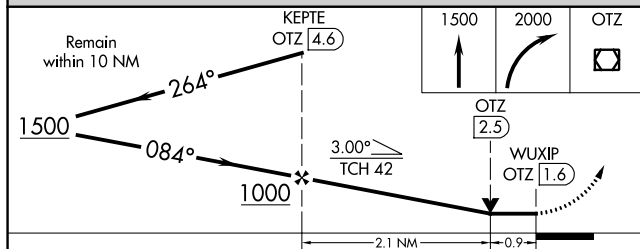
MISSED APPROACH: Climb to 1500 then climbing right turn to 2000 direct OTZ VOR/DME and hold, continue climb-in-hold to 2000.


AFIS 135.45	ANCHORAGE CENTER 119.2 263.0	KOTZEBUE RADIO 123.60 (CTAF)
-----------------------	--	--



Arrivals on B2, B3, B27, G18, and V506 descend to 4300 in HHM NDB holding pattern prior to commencing approach.

ELEV 15	D	TDZE 13
---------	----------	---------



CATEGORY	A	B	C	D
S-9	340/55 327 (400-1)		340/50 327 (400-1)	
 CIRCLING	520-1 505 (600-1)		720-2 705 (800-2)	720-2¼ 705 (800-2¼)

REIL Rwys 9 and 27 **L**
HIRL Rwy 9-27 **L**
MIRL Rwy 18-36 **L**