

LOC I-PAU <u>109.9</u>	APP CRS 180°	Rwy Idg 6500 TDZE 66 Apt Elev 66
----------------------------------	------------------------	---

LOC/DME BC RWY 18
ST PAUL ISLAND (SNP) (PASN)

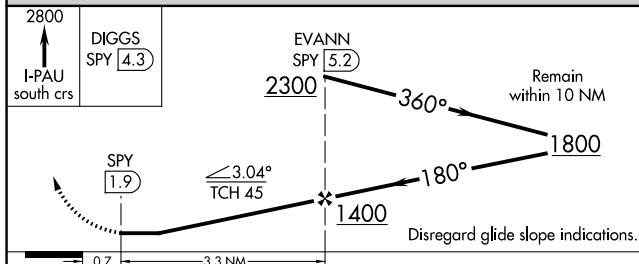
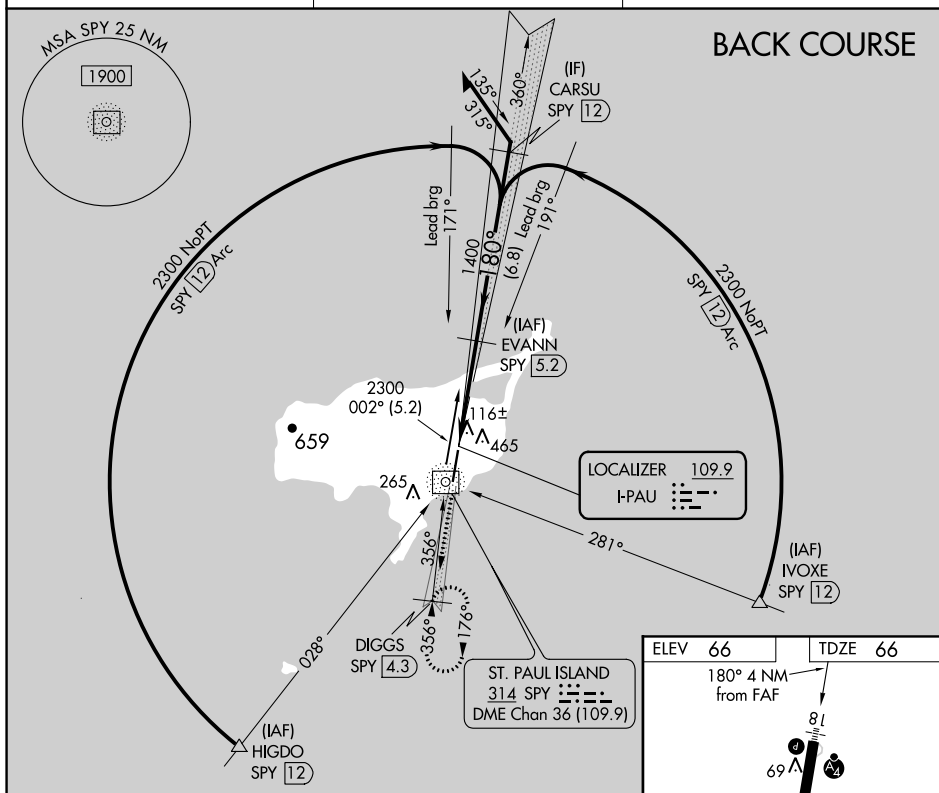
- T** Inoperative table does not apply. Circling NA west of
A Rwy 18-36. Rwy 18 helicopter visibility reduction below
1 SM NA. DME from SPY NDB/DME. Simultaneous
reception of I-PAU and SPY DME required.

MALSF



MISSED APPROACH: Climb to 2800 via I-PAU south course to DIGGS/SPY 4.3 DME and hold, continue climb-in-hold to 2800.

ASOS 135.75	ANCHORAGE CENTER 119.1 339.8	CTAF 122.3 0
----------------	---------------------------------	-----------------



CATEGORY	A	B	C	D
S-18	580-1	514 (600-1)	580-1½	514 (600-1½)
C CIRCLING	800-1	734 (800-1)	800-2 734 (800-2)	800-2¼ 734 (800-2¼)

