


CAPE NEWENHAM, ALASKA

NDB/DME RWY 15

NDB/DME EHM 385 Chan 18 (Y)	APCH CRS 182°	Rwy ldg TDZE Arpt Elev 3945 456 531
---	-------------------------	---

AL-2235 [USAF]

CAPE NEWENHAM LRRS (PAEH)

 Night operations not authorized.	MISSED APPROACH: Climbing right turn to 3900, intercept EHM NDB 002° bearing to ELPEE and hold, continue climb in holding to 3900.
ANCHORAGE CENTER 124.2 251.1	CAPE NEWENHAM RADIO 126.2

MILITARY CERTIFIED
AIRCRAFTS OR AUTHORIZED
CONTRACT AIRCRAFT
ONLY

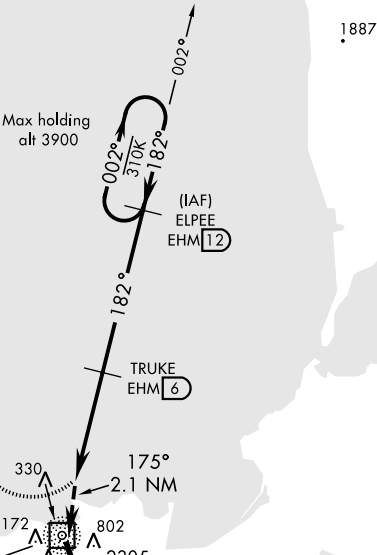
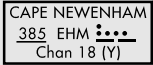
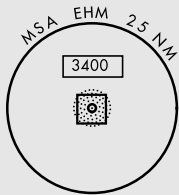
NOT FOR CIVIL USE

CAUTION:
1. Rwy located on slope of 2306' mountain.
High terrain both sides and S end of Rwy.

2. Successful go-around improbable
if initiated past the MAP.

Uncontrolled Airspace below 700' AGL
within 7 NM of Cape Newenham airport.

Terrain, 250 ft MSL, 200 ft from threshold,
1784 ft left of course.



EMERG SAFE ALT 100 NM 6900

<div><div><div>3900</div><div>brg 002°</div></div><div><div>ELPEE</div><div>EHM</div><div>12</div></div></div>					<div><div>ELEV 531</div><div><div><div></div></div></div></div>	<div><div>TDZE 456</div></div>	
<div><div><div><div><div>NDB/DME</div><div>CILAS 2</div></div><div><div>175°</div><div>2.1 NM</div><div>4 NM</div></div></div><div><div>TRUKE 6</div><div>182°</div><div>2200</div></div><div><div>ELPEE 12</div><div>002°</div><div>182°</div><div>3900</div></div></div></div>						<div><div><div><div></div></div><div>175° 2.1 NM from CILAS</div></div><div><div><div>GL</div><div>P</div><div>352</div></div><div>7.7 & UP</div><div>30x5 x 150</div><div>ELEV 531</div><div>33</div></div></div>	
CATEGORY	A	B	C	D			
S-15	1180-2½ 724 (700-2½)						
CIRCLING	NOT AUTHORIZED						
<div>REIL Rwy 15 Land Rwy 15 tkof Rwy 33</div>							

CAPE NEWENHAM, ALASKA

58°39'N-162°04'W

CAPE NEWENHAM LRRS (PAEH)

Amdt 1 22JUN17
TERPS

NDB/DME RWY 15

AK, 31 DEC 2020 to 25 FEB 2021

AK, 31 DEC 2020 to 25 FEB 2021