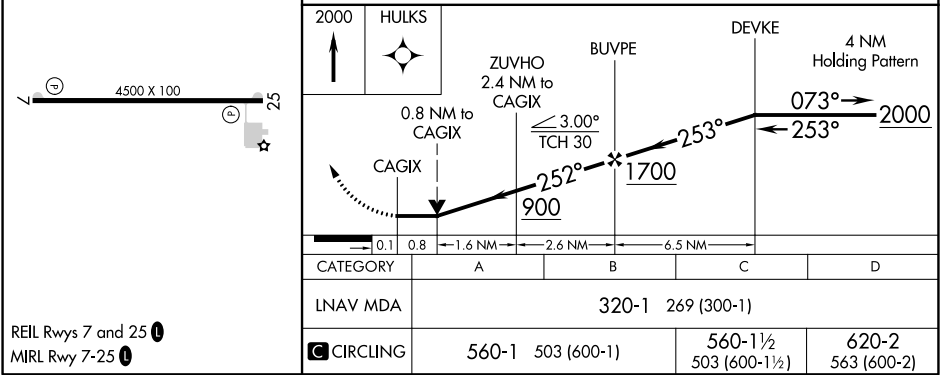
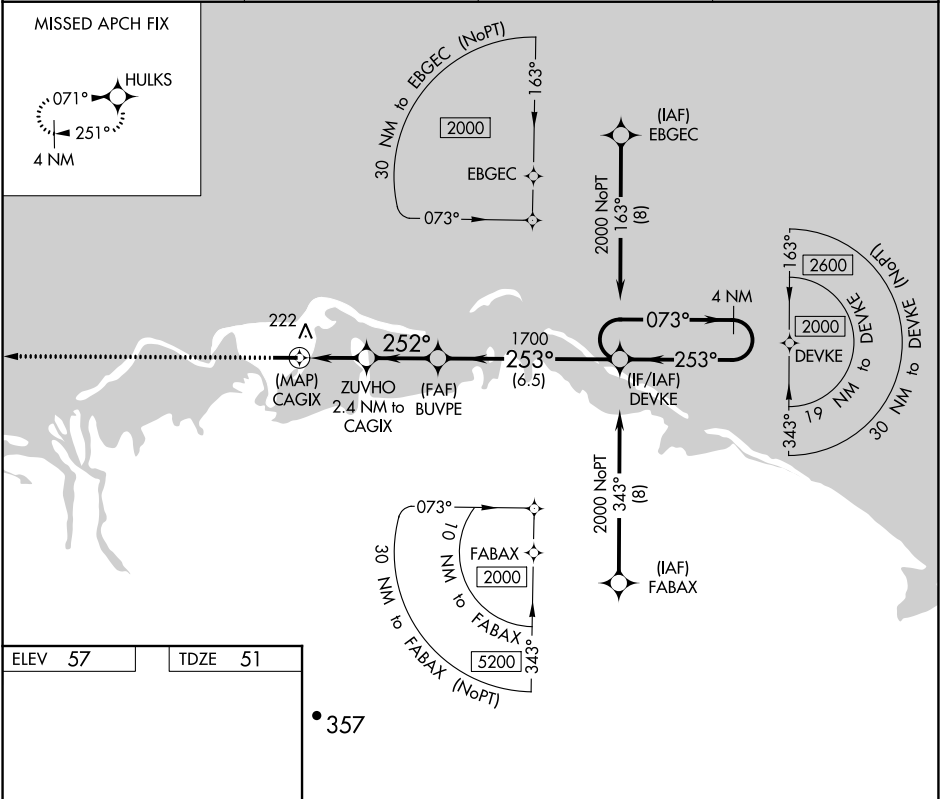


APP CRS	Rwy Idg	4500
252°	TDZE	51
	Apt Elev	57

RNAV (GPS) RWY 25
BARTER ISLAND (BTI)(PABA)

DME/DME RNP-0.3 NA. Helicopter visibility reduction below ¾ SM NA.		MISSED APPROACH: Climb to 2000 direct HULKS and hold.	
---	--	---	--

AWOS-3P 121.45	ANCHORAGE CENTER 120.6	DEADHORSE RADIO 122.0	CTAF 122.8
-------------------	---------------------------	--------------------------	---------------



AK, 31 DEC 2020 to 25 FEB 2021

AK, 31 DEC 2020 to 25 FEB 2021