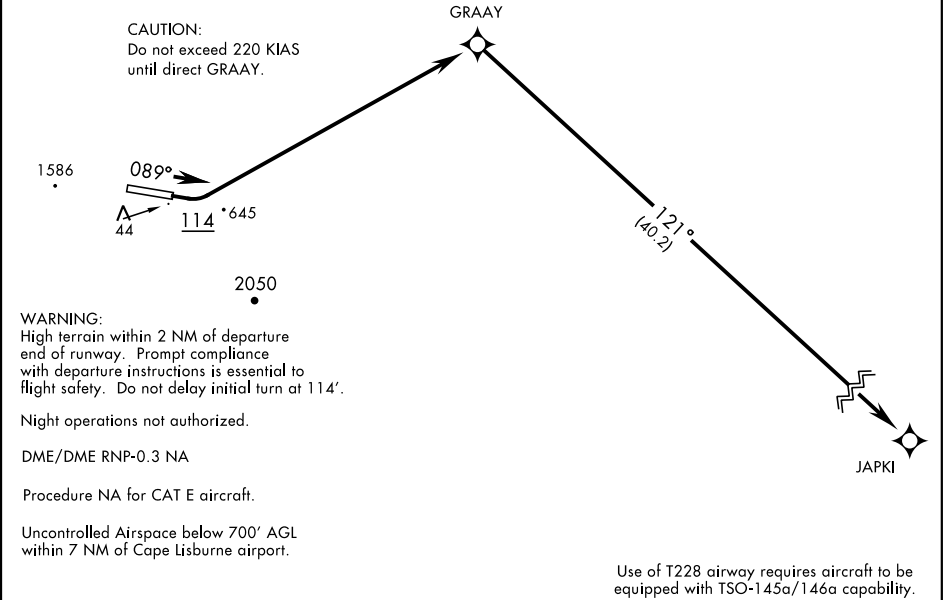


ANCHORAGE CENTER APP/DEP CON 119.65 363.25 CAPE LISBURNE RADIO 126.2 (CTAF)	SL-2327 [USAF]	Rwy	Knots	60	120	180	240	300	360
		9	V/V(fpm)	362	724	1086	1448	1810	2172

Minimum climb gradient to 600

NOT FOR CIVIL USE

For use by certified military aircrew or authorized military contract aircraft only.



GPS REQUIRED

DEPARTURE ROUTE DESCRIPTION
TAKE-OFF RWY 9: Climb heading 089° to 114, then climbing left turn to 8000 direct GRAAY, then right turn on track 121 ° to JAPKI via filed route and altitude.
TAKE-OFF RWY 27: NOT AUTHORIZED