

RNAV (GPS) RWY 34

| | |
|-----------|---------|
| APCH CRS | Rwy ldg |
| 345° | 4702 |
| TDZE | 273 |
| Arpt Elev | 273 |

AL-2334 [USAF]

TIN CITY LRRS (PATC)

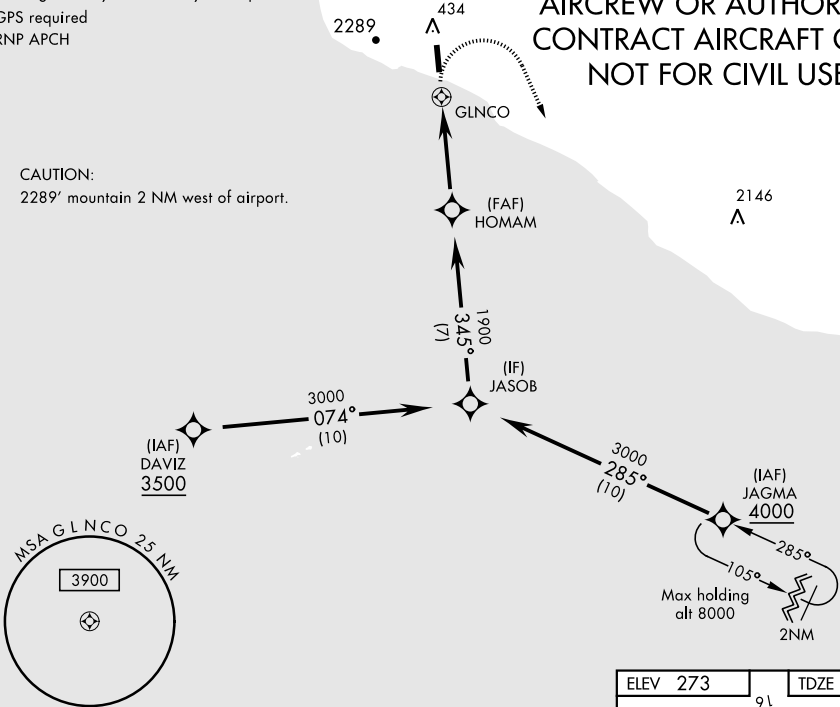
| | |
|--|---|
| <p>Night operations not authorized DME/DME RNP - 0.3 NA *Circling not authorized W of runway 16/34</p> | <p>MISSED APPROACH: Climb to 1500 then climbing right turn to 4000 direct JAGMA and hold.</p> |
|--|---|

| | | |
|---|--|--------------------------------|
| <p>ANCHORAGE CENTER 133.3 290.4</p> | <p>TIN CITY RCO (NOME RADIO) 122.6</p> | <p>UNICOM 126.2 (CTAF)</p> |
|---|--|--------------------------------|

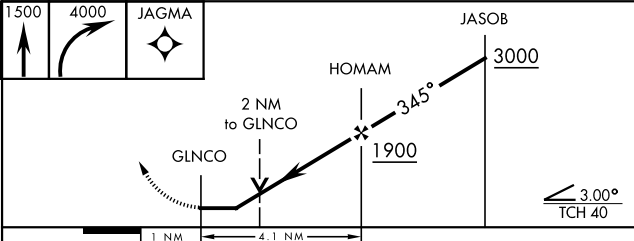
Uncontrolled airspace below 700' AGL within 7 NM of Tin City airport.
Circling visibility reduction by helicopters NA.
GPS required
RNP APCH

MILITARY CERTIFIED
AIRCREW OR AUTHORIZED
CONTRACT AIRCRAFT ONLY
NOT FOR CIVIL USE

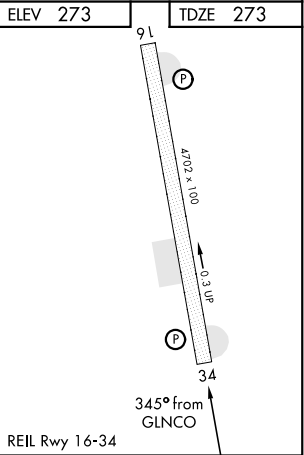
CAUTION:
2289' mountain 2 NM west of airport.



EMERG SAFE ALT 100 NM 6800



| CATEGORY | A | B | C | D |
|-----------|--------------------------|--------------------------|-------------------------|-------------------------|
| LNAV MDA | 1260-1¼ 987 (1000-1¼) | 1260-1½ 987 (1000-1½) | 1280-3 1007 (1100-3) | 1280-3 1007 (1100-3) |
| CIRCLING* | 1260-1¼ 987 (1000-1¼) | 1260-1½ 987 (1000-1½) | 1280-3 1007 (1100-3) | 1280-3 1007 (1100-3) |



RNAV (GPS) RWY 34