

AWOS-3	SL-2335 (USAF)	Rwy	Knots	60	120	180	240	300	360
CTAF		6	V/V(fpm)	255	510	765	1020	1275	1530
126.2		Minimum Climb Rate to 1400							
ANCHORAGE CNTR		Controlling Obstacle 1161							
124.6 352.0									

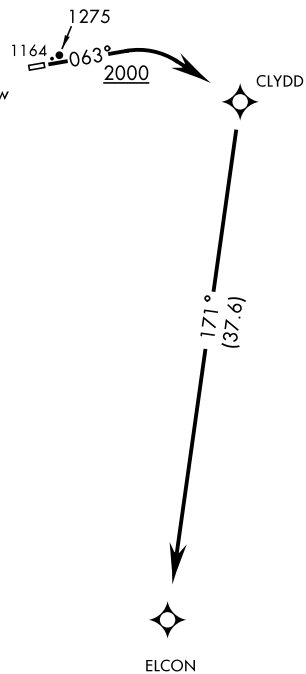
DME/DME RNP - 0.3 NA
RNAV 1

Night operations
not authorized.

Uncontrolled airspace below
700' AGL within 4 NM of
Indian Mountain airport.

NOT FOR CIVIL USE

MILITARY CERTIFIED
AIRCREW or AUTHORIZED
CONTRACT AIRCRAFT ONLY



GPS REQUIRED



DEPARTURE ROUTE DESCRIPTION

TAKE-OFF RWY 06: Climb heading 063° to 2000, then right turn direct CLYDD, then right turn on track 171° to ELCON, climb and maintain 8000.

TAKE-OFF RWY 24: NA

AK, 31 DEC 2020 to 25 FEB 2021

AK, 31 DEC 2020 to 25 FEB 2021