

BETHEL, ALASKA

AL-5001 (FAA)

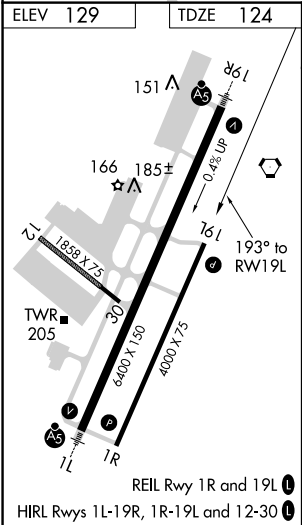
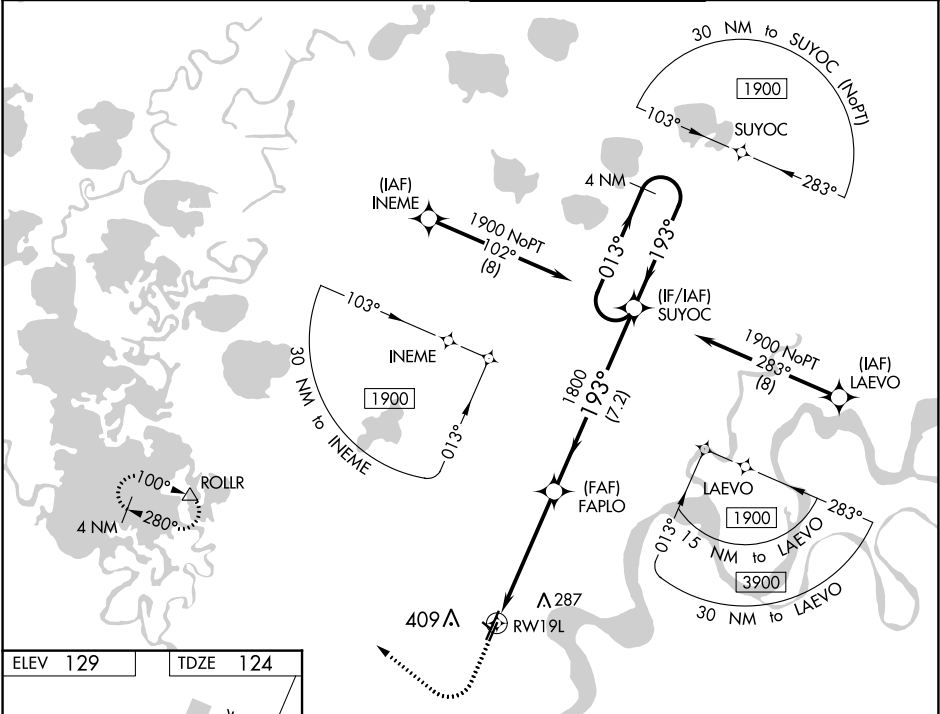
20254

WAAS CH 99440 W19B	APP CRS 193°	Rwy Idg TDZE 124 Apt Elev 129
--	------------------------	---

RNAV (GPS) RWY 19L
BETHEL (BET)(PABE)

<p>▼ For uncompensated Baro-VNAV systems, LNAV/VNAV NA below -19°C (-2°F) or above 54°C (130°F). Circling NA west of Rwy 1L-19R. DME/DME RNP-0.3 NA.</p>	<p>MISSED APPROACH: Climb to 600 then climbing right turn to 2000 direct ROLLR and hold.</p>
---	--

ATIS 119.8	ANCHORAGE CENTER 125.2 372.0	BETHEL TOWER ★ 118.7 (CTAF) 0	GND CON 121.7
----------------------	--	---	-------------------------



ELEV 129	TDZE 124
<p>600 2000 ROLLR</p> <p>VGSI and RNAV glidepath not coincident (VGSI Angle 3.00/TCH 32).</p>	
<p>*LNAV only</p> <p>*1.1 NM to RW19L</p> <p>1800 193° 013° 1900</p> <p>4 NM Holding Pattern</p> <p>GP 3.00° TCH 50</p>	
CATEGORY	A B C D
LPV DA	374-¾ 250 (300-¾)
LNAV/VNAV DA	374-¾ 250 (300-¾)
LNAV MDA	500-1 376 (400-1)
CIRCLING	500-1 371 (400-1) 600-1 471 (500-1) 600-1½ 471 (500-1½) 680-2 551 (600-2)

BETHEL, ALASKA

Amdt 1 22JUN17

60°47'N-161°50'W

BETHEL (BET)(PABE)

RNAV (GPS) RWY 19L

AK, 31 DEC 2020 to 25 FEB 2021

AK, 31 DEC 2020 to 25 FEB 2021