

WAAS CH 42707 W01A	APP CRS 012°	Rwy Idg 6400 TDZE 127 Apt Elev 129
--	------------------------	---

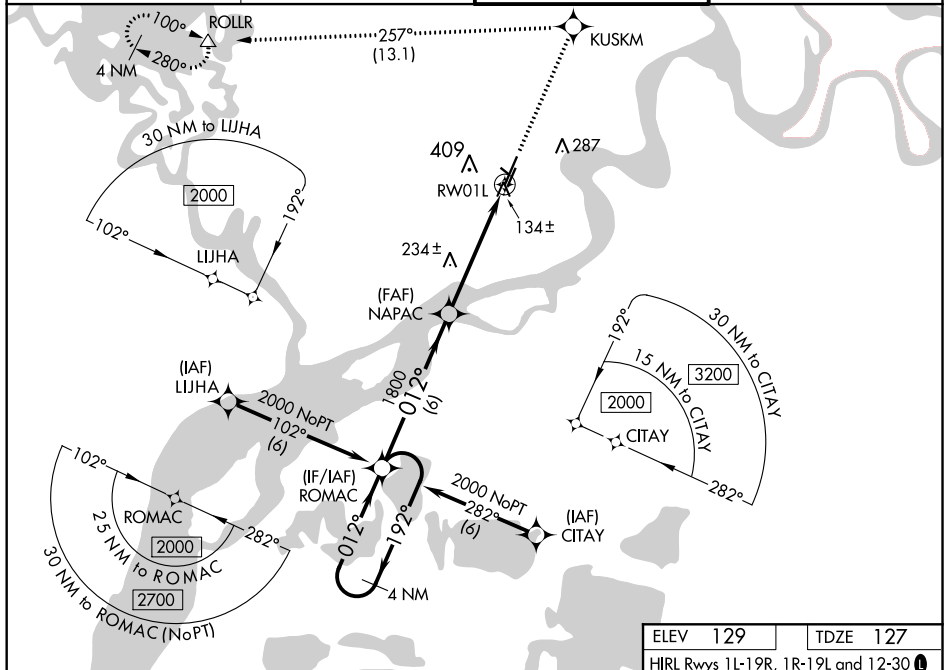
RNAV (GPS) RWY 1L
BETHEL (BET)(PABE)

T For uncompensated Baro-VNAV systems, LNAV/VNAV NA below -25°C (-13°F) or above 54°C (130°F).
Circling NA west of Rwy 1L-19R. DME/DME RNP-0.3 NA.
For inop ALS, increase LNAV Cat C/D visibility to RVR 6000.



MISSED APPROACH: Climb to 2000
direct KUSKM and left turn on track
257° to ROLLR and hold.

ATIS 119.8	ANCHORAGE CENTER 125.2 372.0	BETHEL TOWER ★ 118.7 (CTAF) 0	GND CON 121.7
----------------------	--	--	-------------------------



VGSB and RNAV glidepath not coincident (VGSB Angle 3.00/TCH 39).

4 NM Holding Pattern ROMAC

2000 ← 192° 012° → 1800 012°

GP 3.00° TCH 47

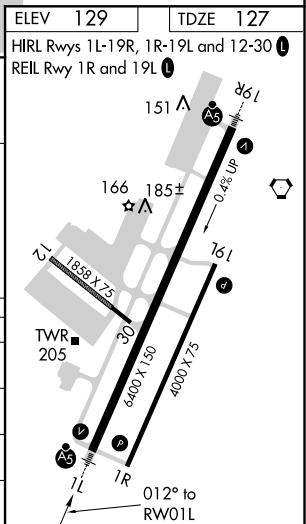
NAPAC 1800

*1.1 NM to RW01L

RW01L

*LNAV only

CATEGORY	A	B	C	D
LPV DA	377/24	250 (300-½)		
LNAV/VNAV DA	555/50	428 (500-1)		
LNAV MDA	500/24	373 (400-½)	500/50	373 (400-1)
CIRCLING	500-1 371 (400-1)	600-1 471 (500-1)	600-1½ 471 (500-1½)	680-2 551 (600-2)



AK, 31 DEC 2020 to 25 FEB 2021

AK, 31 DEC 2020 to 25 FEB 2021