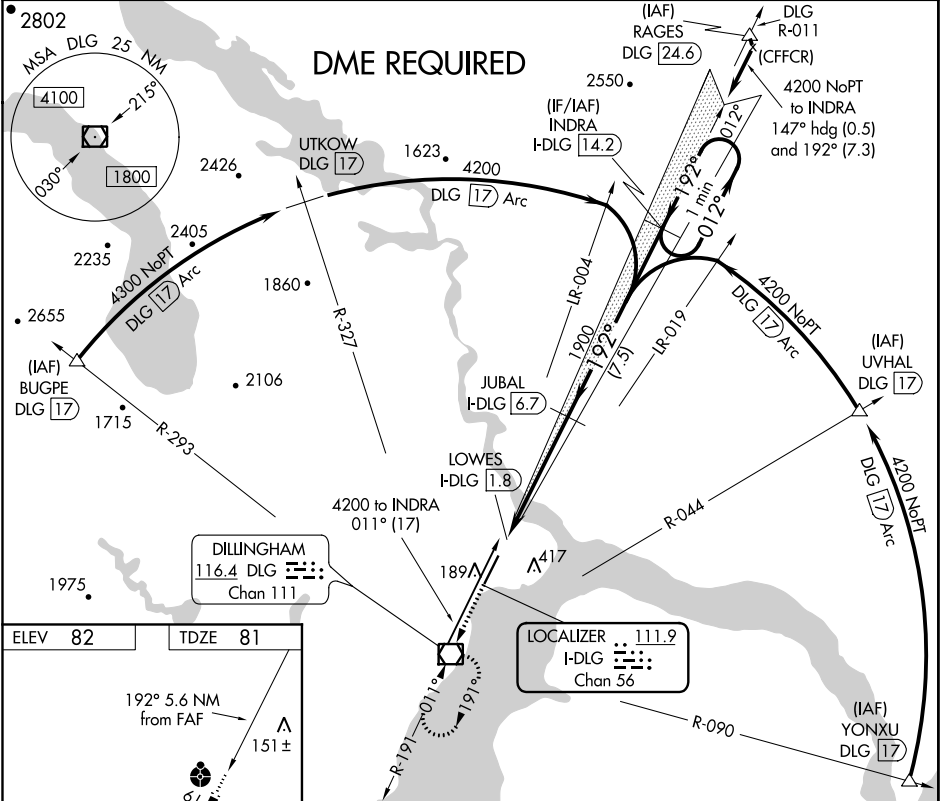


LOC/DME I-DLG 111.9 Chan 56	APP CRS 192°	Rwy Idg 6400 TDZE 81 Apt Elev 82	LOC RWY 19 DILLINGHAM (DLG)(PADL)
---	------------------------	---	---

⚠ Inop table does not apply to S-LOC 19 Cats A/B. Inop table does not apply to when using Manokatak altimeter setting. For inop ALS, increase S-LOC 19 Cat C/D visibility to 1 3/8 SM. Circling NA east of Rwy 1-19. Helicopter visibility reduction below 3/4 SM NA. DME required. VDP NA with Manokatak altimeter setting. When local altimeter not received, use Manokatak altimeter setting and increase all MDA 40 feet; increase S-LOC 19 Cats C/D visibility 1/8 SM and Circling Cat C visibility 1/4 SM.

ODALS MISSED APPROACH: Climb to 4200 direct DLG VOR/DME and hold, continue climb-in-hold to 4200.

AFIS ★ 125.0	ANCHORAGE CENTER 132.75 282.35	DILLINGHAM RADIO 123.6 (CTAF) 0
------------------------	--	---



4200 **DLG**

LOC unusable from I-DLG 1.8 DME inbound.
Visual Segment - Obstacles.

INDRA I-DLG 14.2 One Minute Holding Pattern

JUBAL I-DLG 6.7

LOWES I-DLG 1.8

192° 012° 4200

1900

Use I-DLG DME when on the localizer course.

0.7 0.7 4.2 NM 7.5 NM

CATEGORY	A	B	C	D
S-19	560-1 479 (500-1)		560-1 1/4 479 (500-1 1/4)	
CIRCLING	600-1 518 (600-1)		700-1 1/2 618 (700-1 1/2)	780-2 1/4 698 (700-2 1/4)