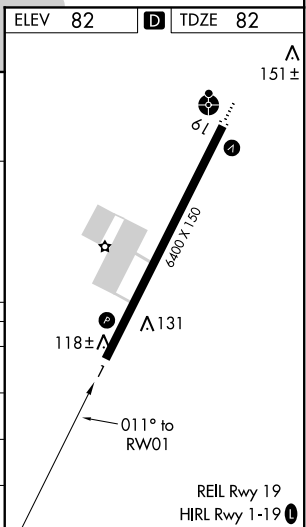
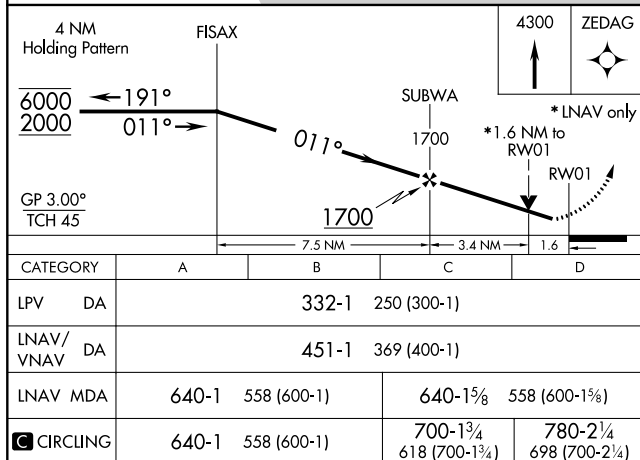
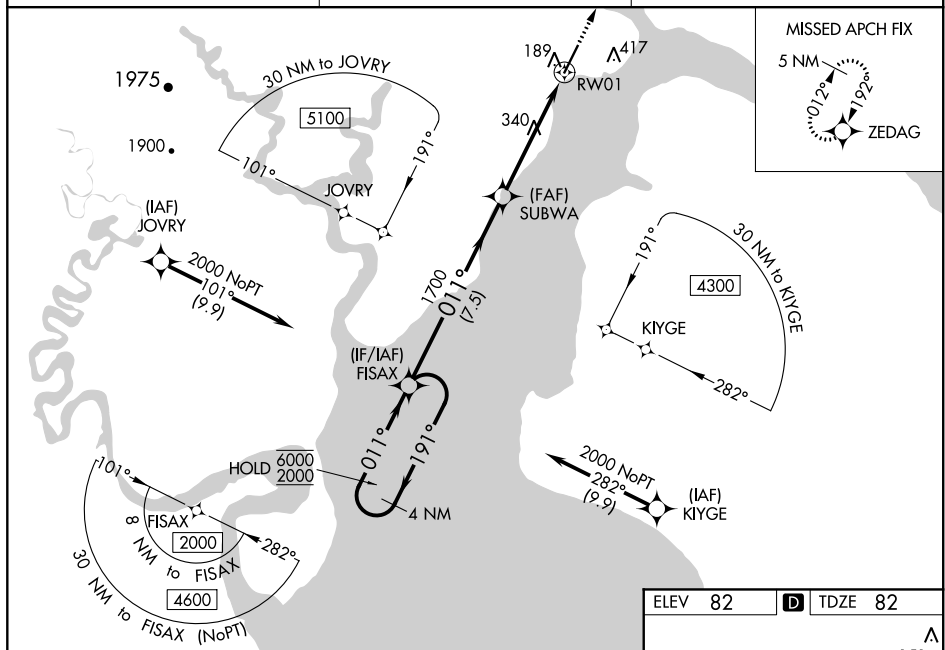


RNAV (GPS) RWY 1
DILLINGHAM (DLG)(PADL)

T Circling NA east of Rwy 1-19.
A For uncompensated Baro-VNAV systems,
 procedure NA below -20°C or above 54°C.
 Rwy 1 helicopter visibility reduction below $\frac{3}{4}$ SM NA.

MISSED APPROACH: Climb to 4300 direct ZEDAG and hold, continue climb-in-hold to 4300.

DILLINGHAM RADIO
123.6 (CTAF) **L**



AK, 31 DEC 2020 to 25 FEB 2021