

LOC/DME I-SIT	APP CRS	Rwy Idg	6500
108.9	115°	TDZE	24
Chan 26		Apt Elev	26

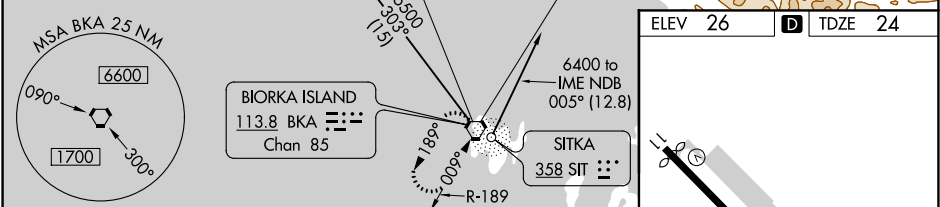
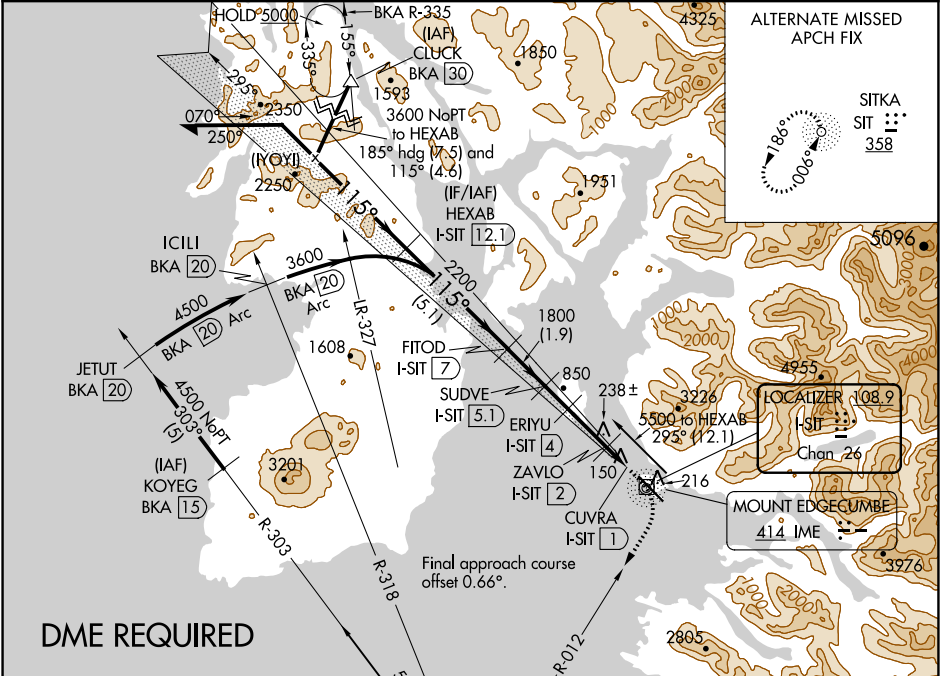
LDA/DME RWY 11

SITKA ROCKY GUTIERREZ (SIT)(PASI)

When local altimeter setting not received, procedure NA.
Circling NA northeast of Rwy 11-29.

MISSED APPROACH: Climb to 500 then climbing right turn to 5500 on heading 192° and BKA R-012 to BKA VORTAC and hold, continue climb-in-hold to 5500.

AFIS	ANCHORAGE CENTER	SITKA RADIO	UNICOM
135.9	126.1 335.5	123.6 (CTAF) 0 122.2	122.95



Remain within 10 NM	HEXAB I-SIT 12.1	VGSI and descent angles not coincident (VGSI Angle 3.00/TCH 50).	500	5500	BKA R-012	BKA
4200	295°	4900	1800	1280	500	
Use I-SIT DME when on the localizer course.	115°	3600	2200	1800	1280	500
			5.1 NM	1.9 NM	1.1 NM	2 NM
CATEGORY	A	B	C	D		
S-11		400-1	376 (400-1)			
CIRCLING	520-1	494 (500-1)	760-2 734 (800-2)	1760-3 1734 (1800-3)		

