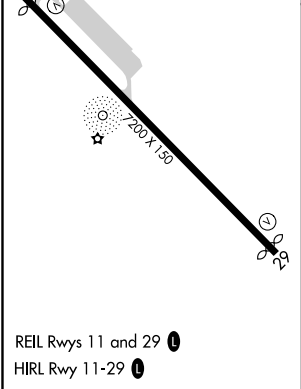
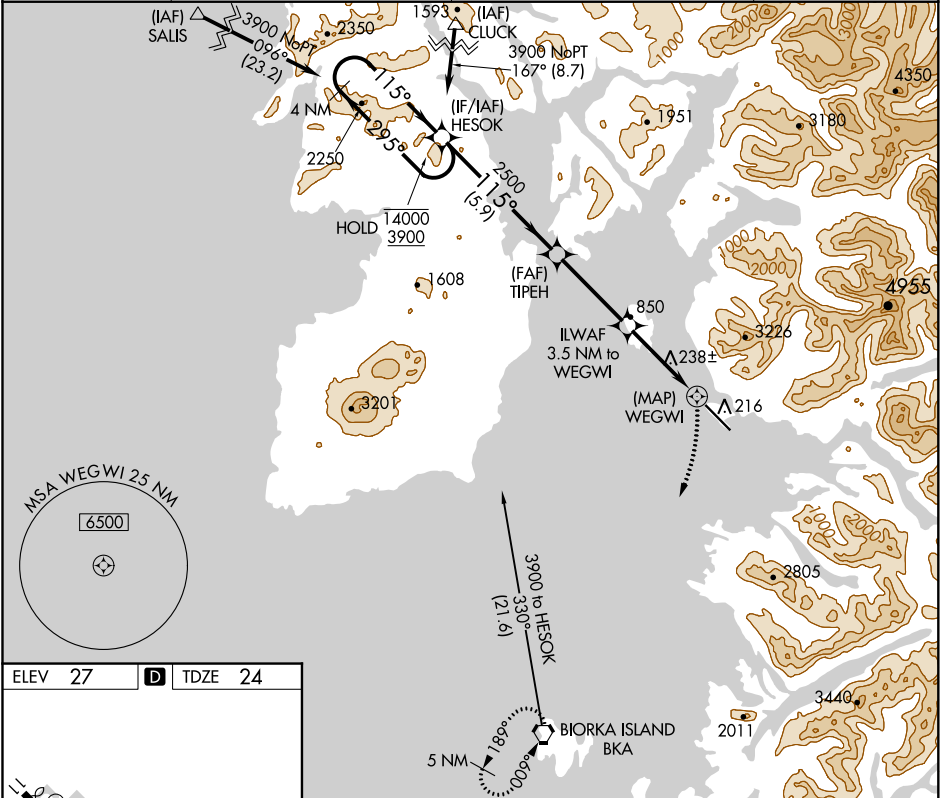


WAAS CH <b>56632</b>	APP CRS <b>115°</b>	Rwy Idg TDZE <b>6500</b> <b>24</b>
<b>W11A</b>		Apt Elev <b>27</b>

RNAV (GPS) RWY 11  
SITKA ROCKY GUTIERREZ (SIT)(PASI)

RNP APCH. When local altimeter setting not received, procedure NA. Circling NA northeast of Rwy 11-29.	MISSED APPROACH: Climbing right turn to 5000 direct BKA VORTAC and hold, continue climb-in-hold to 5000.
--	---

AFIS <b>135.9</b>	ANCHORAGE CENTER <b>126.1 335.5</b>	SITKA RADIO <b>123.6 (CTAF) 122.2</b>	UNICOM <b>122.95</b>
----------------------	--	--	-------------------------



4 NM Holding Pattern		HESOK	TIPEH	ILWAF 3.5 NM to WEGWI	0.8 NM to WEGWI	5000	BKA
1400 ← 295°		3900 → 115°	115°	2500	1360		
		5.9 NM	3.6 NM	2.7 NM	0.8	0.5	
CATEGORY	A	B	C	D			
LP	MDA	500-1	476 (500-1)	500-1 $\frac{3}{8}$	476 (500-1 $\frac{3}{8}$ )		
LNAV	MDA	1300-1 $\frac{1}{4}$ 1276 (1300-1 $\frac{1}{4}$ )	1300-1 $\frac{1}{2}$ 1276 (1300-1 $\frac{1}{2}$ )	1300-3	1276 (1300-3)		
CIRCLING		1300-1 $\frac{1}{4}$ 1273 (1300-1 $\frac{1}{4}$ )	1300-1 $\frac{1}{2}$ 1273 (1300-1 $\frac{1}{2}$ )	1300-3	1660-3 1633 (1700-3)		

AK, 31 DEC 2020 to 25 FEB 2021

AK, 31 DEC 2020 to 25 FEB 2021