

APP CRS  
251°

Rwy Idg  
5900

TDZE  
48

Apt Elev  
52

RNAV (GPS) RWY 25

WILEY POST-WILL ROGERS MEMORIAL (BRW)(PABR)

▼

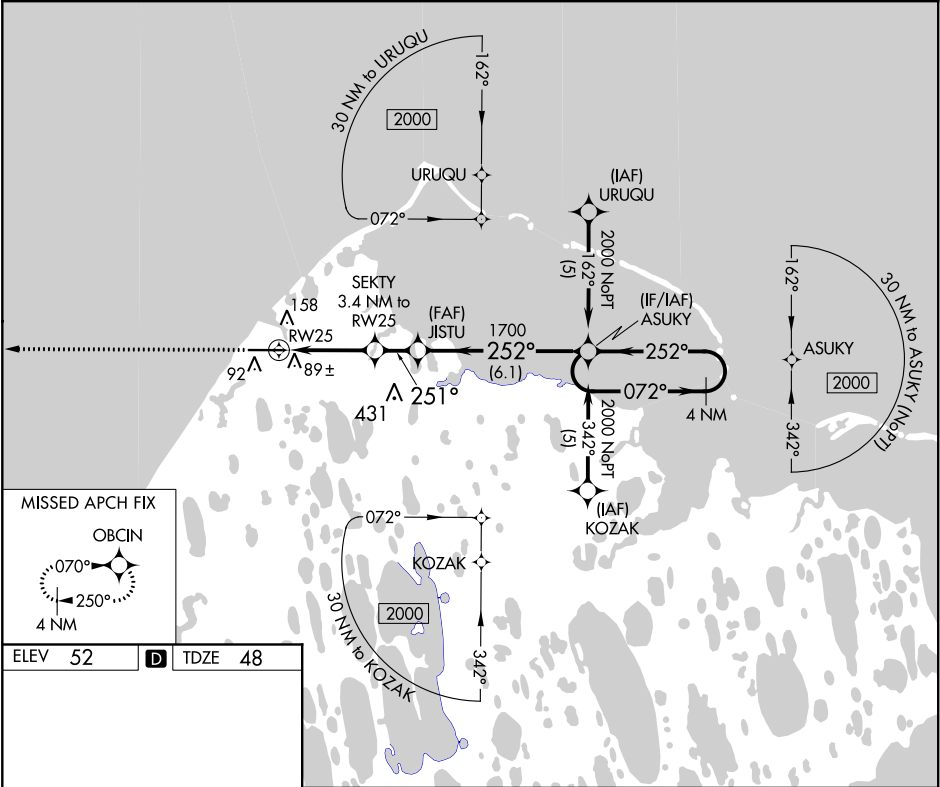
▲

❄️ -42°C

DME/DME RNP-0.3 NA. When local alimeter setting not received, use Atkasuk altimeter setting and increase all MDA 140 feet and LNAV and Circling Cat C and D visibility ½ mile. Circling NA for Cat A north of Rwy 7-25. VDP NA with Atkasuk altimeter setting.

MISSED APPROACH:  
Climb to 2000 direct OBCIN and hold.

AFIS 132.15	ANCHORAGE CENTER 135.3 239.25	BARROW RADIO 123.6 (CTAF) 0
----------------	----------------------------------	--------------------------------



ELEV 52

TDZE 48

REIL Rwy 25 0

HIRL Rwy 7-25 0

2000 OBCIN

SEKTY 3.4 NM to RW25

JISTU

ASUKY 4 NM Holding Pattern

ASUKY 2000

072° →

← 252°

251° to RW25

0.8 NM to RW25

0.8

2.6 NM

1.5 NM

6.1 NM

1200

1700

3.04° TCH 50

CATEGORY	A	B	C	D
LNAV MDA	360/50 312 (400-1)			
CIRCLING	420-1 368 (400-1)	520-1 468 (500-1)	520-1½ 468 (500-1½)	620-2 568 (600-2)