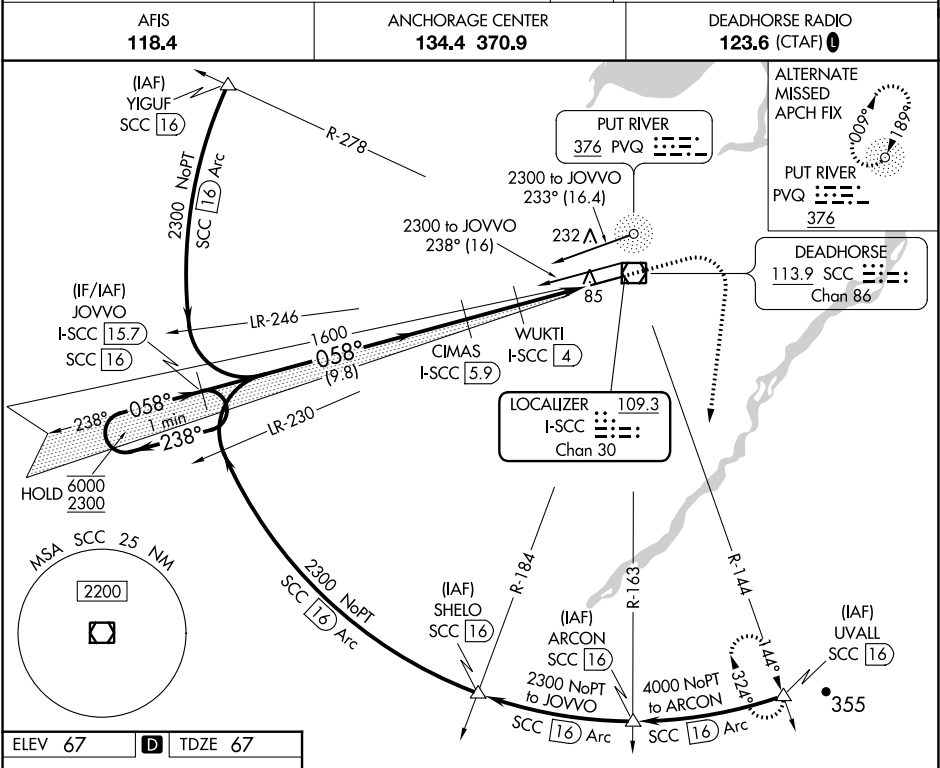


LOC/DME I-SCC	APP CRS	Rwy Idg	6500
109.3	058°	TDZE	67
Chan 30		Apt Elev	67

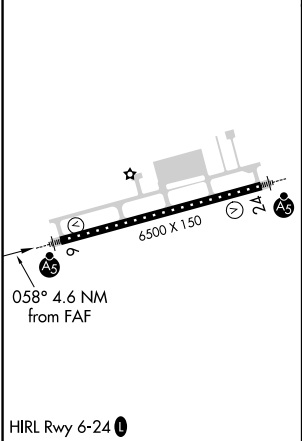
ILS or LOC RWY 6

DEADHORSE (SCC) (PASC)

DME required.	MALSR	MISSED APPROACH: Climb to 1500 then climbing right turn to 4000 on heading 170° and SCC VOR/DME R-144 to UVAL/SCC 16 DME and hold.
<div><div>For inop ALS, increase S-ILS 6 Cat E visibility to RVR 4000 and S-LOC 6 Cats C/D/E to RVR 4500.</div><div><div>-45°C</div><div># RVR 1800 authorized with use of FD or AP or HUD to DA.</div></div></div>	<div><div></div><div></div></div>	



ELEV 67	D	TDZE 67
---------	---	---------



Use I-SCC DME when on the localizer course. VGSI and ILS glidepath not coincident (VGSI Angle 3.00/TCH 50).					1500 ↑	4000 hdg 170°	SCC R-144	UVAL △
One Minute Holding Pattern		JOVVO I-SCC 15.7	*LOC only					
6000 ← 238° 2300 058° →		CIMAS I-SCC 5.9	1600	WUKTI I-SCC 4	*I-SCC 2	I-SCC 1.3		
GS 3.00° TCH 58		058°	1600	*980				
		9.8 NM	1.9 NM	2 NM	0.8			
CATEGORY	A	B	C	D	E			
S-ILS 6 #	267/24 200 (200-½)							
S-LOC 6	360/24 293 (300-½)							
CIRCLING	540-1	473 (500-1)	580-1½ 513 (600-1½)	620-2	553 (600-2)			