




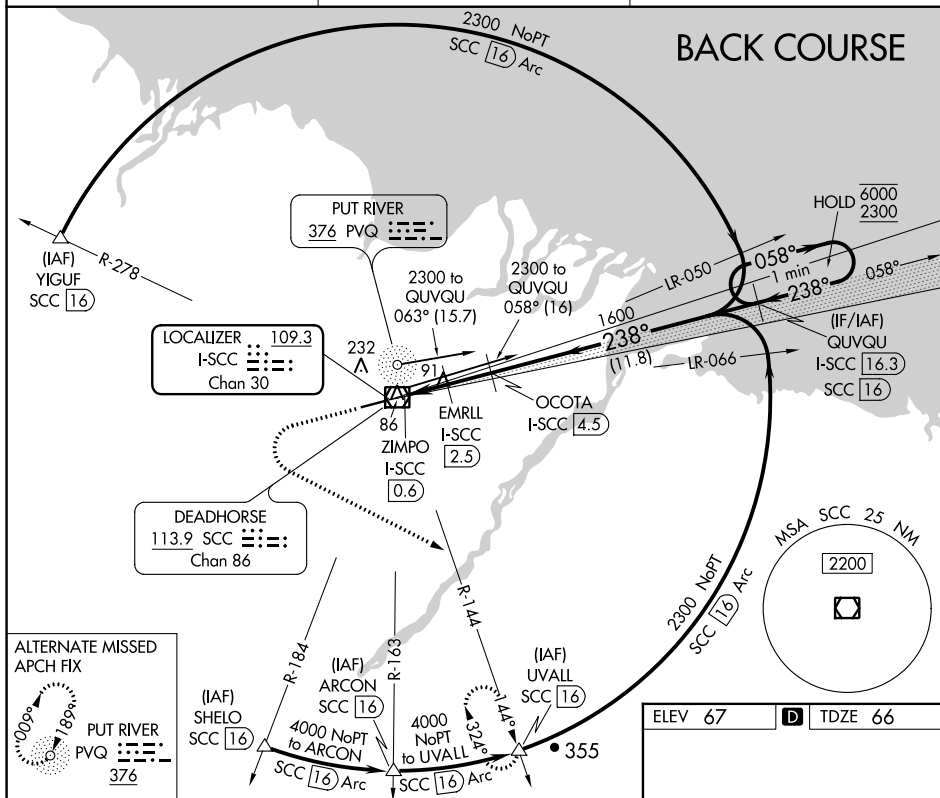
LOC BC RWY 24
DEADHORSE (SCC) (PASC)

MISSED APPROACH: Climb to 1500 then climbing left turn to 4000 on heading 100° and SCC VOR/DME R-144 to UVALL/SCC VOR/DME 16 DME and hold.

   -45°C

For inop ALS, increase S-24 Cat E visibility to RVR 5000.

DEADHORSE RADIO
123.6 (CTAF) **L**



ALTERNATIVE
APCH FIX



1500 4000
↑ hdg 100°
SCC R-144
UVAL △

Use I-SCC DME when on the localizer course.

OCOTA I-SCC 4.5
EMRLL I-SCC 2.5
ZIMPO I-SCC 0.6
QUVCU I-SCC 16.3

One Minute Holding Pattern

058° → 6000
← 238° 2300

Disregard GS indications

980 1600

3.00° TCH 54

238°

	0.8	1.9 NM	2 NM	11.8 NM	
CATEGORY	A	B	C	D	E
S-24	340-24 274 (300-1/2)				
C CIRCLING	540-1 473 (500-1)	580-1 1/2 513 (600-1 1/2)	620-2 553 (600-2)		

ELEV 67	D	TDZE 66
---------	----------	---------

HIRL Rwy 6-24 **L**