

WAAS CH <b>69203</b> <b>W24A</b>	APP CRS <b>238°</b>	Rwy Idg TDZE Apt Elev	<b>6500</b> <b>66</b> <b>67</b>
--	------------------------	-----------------------------	---------------------------------------

RNAV (GPS) Z RWY 24

DEADHORSE (SCC) (PASC)

⚠

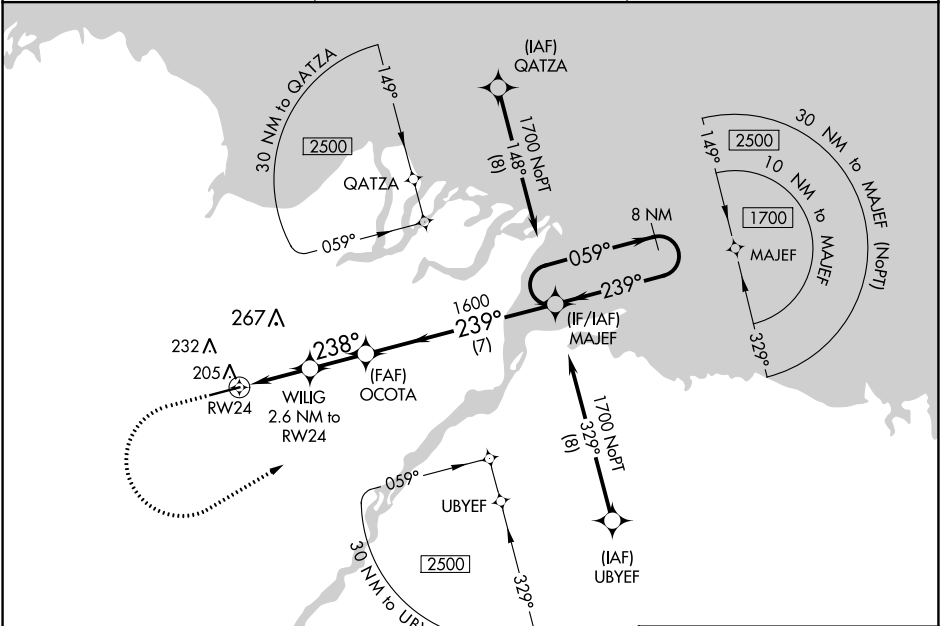
-45°C

For uncompensated Baro-VNAV systems, LNAV/VNAV NA below -17°C (2°F) or above 54°C (130°F). DME/DME RNP-0.3 NA.  
For inop ALS, increase LPV Cat E visibility to RVR 4000, LNAV/VNAV all Cats visibility to RVR 5000, and LNAV Cat E visibility to RVR 6000.  
# RVR 1800 authorized with use of FD or AP or HUD to DA.

MALSR

MISSED APPROACH: Climb to 500 then climbing left turn to 1700 direct MAJEF and hold.

AFIS <b>118.4</b>	ANCHORAGE CENTER <b>134.4 370.9</b>	DEADHORSE RADIO <b>123.6 (CTAF) 0</b>
----------------------	--	--



ELEV 67

TDZE 66

500

1700

MAJEF

\* LNAV only.

WILIG 2.6 NM to RW24

\* 1.1 NM to RW24

OCOTA 1600

MAJEF 8 NM Holding Pattern

GP 3.00° TCH 54

1.1

1.5 NM

2.1 NM

7 NM

CATEGORY	A	B	C	D	E
LPV DA#	266/24 200 (200-½)				
LNAV/VNAV DA	381/30 315 (400-¾)				
LNAV MDA	460/24	394 (400-½)	460/35	394 (400-¾)	
CIRCLING	540-1	473 (500-1)	580-1½ 513 (600-1½)	620-2	553 (600-2)

HIRL Rwy 6-24 0