

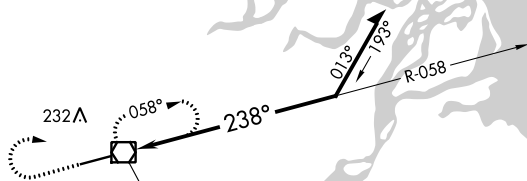
20366

VOR Y RWY 24  
DEADHORSE (SCC) (PASC)

MALSR

**MISSED APPROACH:** Climb to 1500 then climbing right turn to 2000 direct SCC VOR/DME and hold, continue climb-in-hold to 2000.

ANCHORAGE CENTER  
134.4 370.9

DEADHORSE RADIO  
123.6 (CTAF) **L**

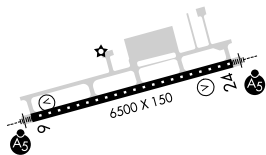
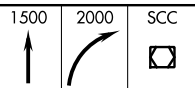
IAF  
DEADHORSE  
113.9 SCC ::::  
Chan 86

MSA SCC 25 NM

2200

● 355

ELEV 67	<b>D</b>	TDZE 66
---------	----------	---------

HIRL Rwy 6-24 **L**

SCC  
VOR/DME

Remain within 10 NM

058°

SCC  
1

1600

← 1.5 nm

CATEGORY	A	B	C	D
S-24	580/24	514 (600-½)	580/55	514 (600-1)
<b>C</b> CIRCLING	580-1	513 (600-1)	580-1½ 513 (600-1½)	620-2 553 (600-2)

70°12'N-148°28'W

DEADHORSE (SCC) (PASC)  
VOR Y RWY 24

AK, 31 DEC 2020 to 25 FEB 2021