

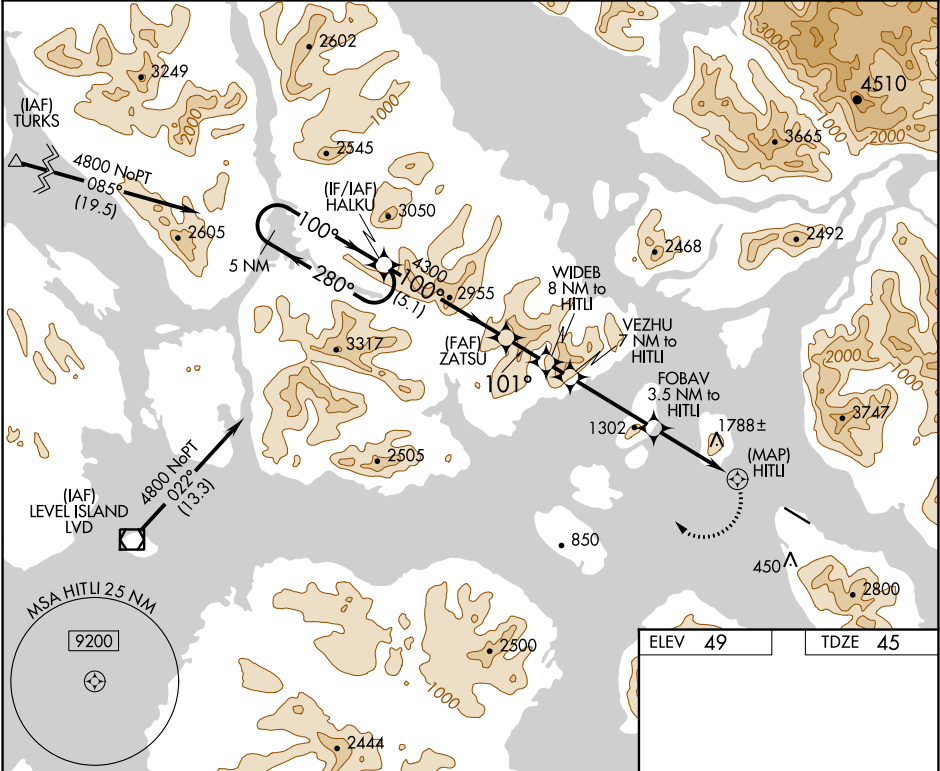
APP CRS	Rwy Idg	6000
101°	TDZE	45
	Apt Elev	49

RNAV (GPS) RWY 10

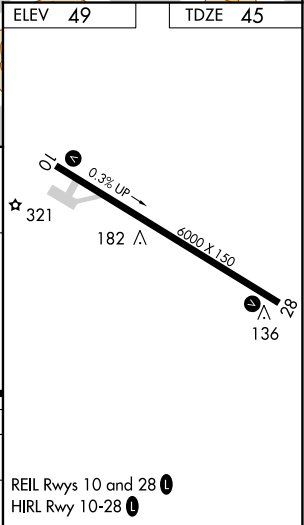
WRANGELL (WRG) (PAWG)

<div><div>▼</div><div>▲</div><div>☼</div></div> <div><div>Circling NA South of Rwy 10-28.</div><div>DME/DME RNP 0.3 NA.</div><div>Procedure NA at night.</div></div>	<div>MISSED APPROACH:</div> <div>Climbing right turn to 4800</div> <div>direct HALKU and hold.</div>
--	--

AWOS-3P	ANCHORAGE CENTER	SITKA RADIO	CTAF
128.5	118.0	122.45	122.6



5 NM Holding Pattern		HALKU	ZATSU	WIDE B 8 NM to HITLI	VEZHU 7 NM to HITLI	FOBAY 3.5 NM to HITLI	HITLI
4800 ← 280°		100° →	100°	4300	3780	3400	2120
VGSI and descent angles not coincident (VGSI Angle 3.00/TCH 52).			3.49° TCH 52				
		5.1 NM	1.7 NM	1 NM	3.5 NM	3.5 NM	2 NM
CATEGORY	A	B	C	D			
LNAV MDA	2080-2½	2035 (2100-2½)	2080-3	NA			
			2035 (2100-3)				
☐ CIRCLING	2080-2½	2031 (2100-2½)	2500-3	NA			
			2451 (2500-3)				



AK, 31 DEC 2020 to 25 FEB 2021

AK, 31 DEC 2020 to 25 FEB 2021