

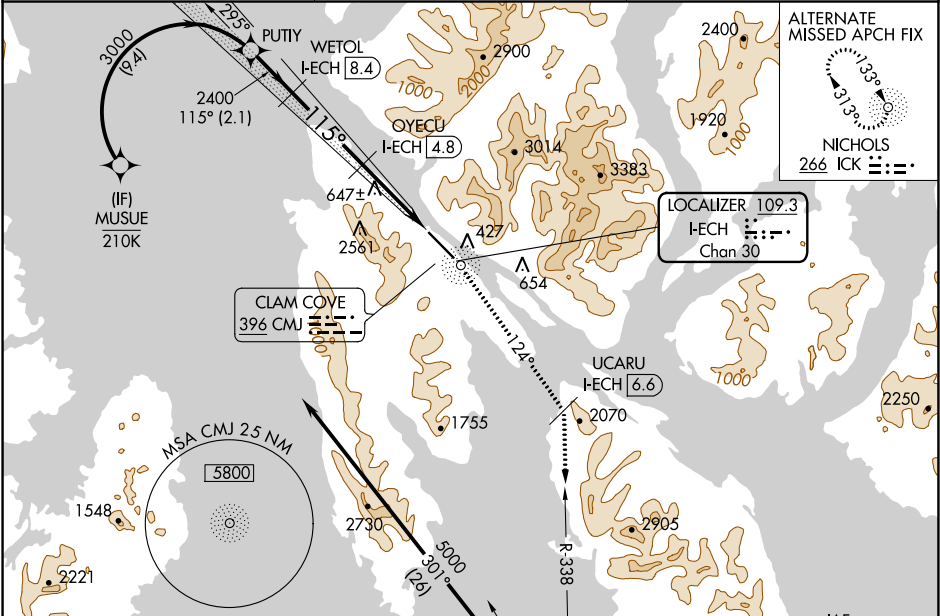
LOC/DME I-ECH 109.3 Chan 30	APP CRS 115°	Rwy Idg TDZE 92 Apt Elev 92	ILS Z or LOC Z RWY 11 KETCHIKAN INTL (KTN)(PAKT)
--	------------------------	---	---

RF, GPS, DME and ADF required. For inop MALS, increase S-LOC 11 Cats C and D visibility to 2½. # RVR 1800 authorized with the use of FD or AP or HUD to DA.

MALS

MISSED APPROACH: Climb to 5000 direct CMJ NDB and on CMJ NDB bearing 124° to UCARU I-ECH 6.6 DME and on ANN VOR/DME R-338 to ANN VOR/DME and hold.
S-ILS 11 missed approach requires minimum climb of 305 feet per NM to 4000.
S-LOC 11 missed approach requires minimum climb of 235 feet per NM to 4000.
If unable to meet climb gradients, see LOC X RWY 11.

AFIS 134.45	ANCHORAGE CENTER 118.5 284.6	KETCHIKAN RADIO 123.6 (CTAF)
-----------------------	--	--



ELEV 92

TDZE 92

115° 7 NM from FAF

WATER RWY: WNW-ESE 9500 X 1500

HIRL Rwy 11-29

Use I-ECH DME when on the localizer course.		MUSUE		PUTYI		WETOL I-ECH 8.4		OYECU I-ECH 4.8		UCARU I-ECH 6.6		ANN R-338		ANN	
5000		3000		2400		2070		2344		2882		3591			
GS 3.00°		TCH 50		115°		124°		129°		129°		129°			
9.4 NM		2.1 NM		3.6 NM		1.1 NM		2.3 NM							
CATEGORY		A		B		C		D							
# S-ILS 11		292/24		200 (200-½)											
S-LOC 11		880/24 788 (800-½)		880/40 788 (800-¾)		880-1¾ 788 (800-1¾)									

KETCHIKAN, ALASKA

Amdt 1 10NOV16

55°21'N-131°43'W

KETCHIKAN INTL (KTN)(PAKT)

ILS Z or LOC Z RWY 11