

LOC/DME I-SMA 109.1 Chan 28	APP CRS 170°	Rwy Idg TDZE Apt Elev	6008 302 312
---	------------------------	-----------------------------	---

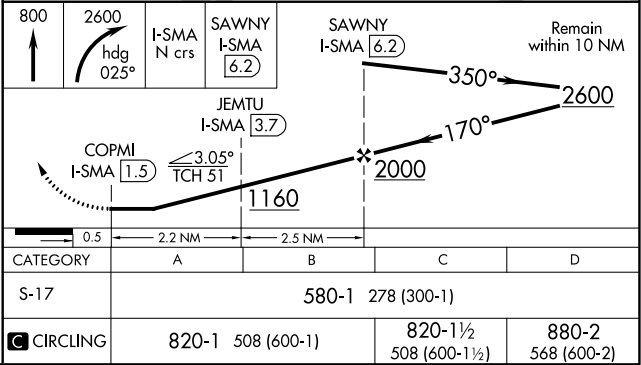
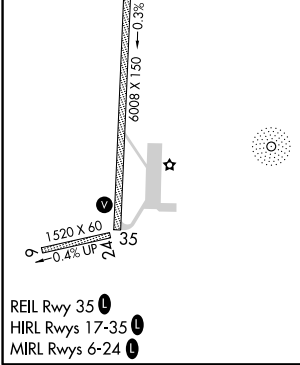
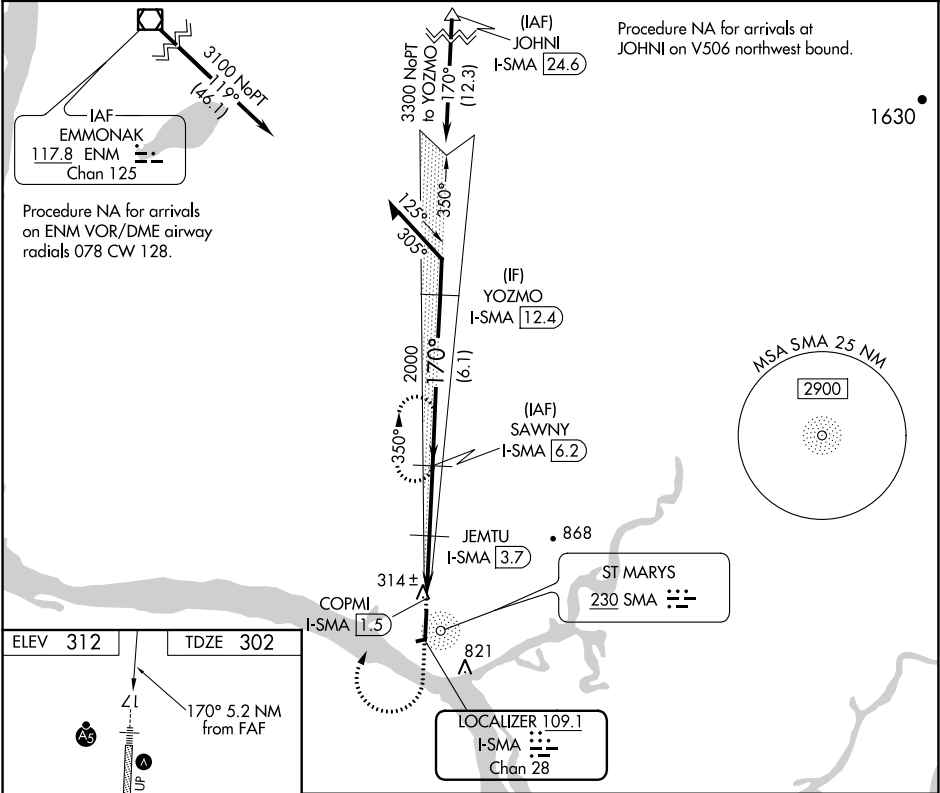
LOC/DME RWY 17
ST MARY'S (KSM)(PASM)

⚠ Inoperative table does not apply. Circling NA east of Rwy 17-35. When local altimeter setting not received use Mountain Village altimeter setting and increase all MDAs 40 feet.

MALSR
A5

MISSED APPROACH: Climb to 800 then climbing right turn to 2600 on heading 025° and on I-SMA north course to SAWNY/I-SMA 6.2 DME and hold.

AWOS-3P 128.7	ANCHORAGE CENTER 124.0	CTAF 122.3 0
-------------------------	----------------------------------	------------------------



AK, 31 DEC 2020 to 25 FEB 2021

AK, 31 DEC 2020 to 25 FEB 2021