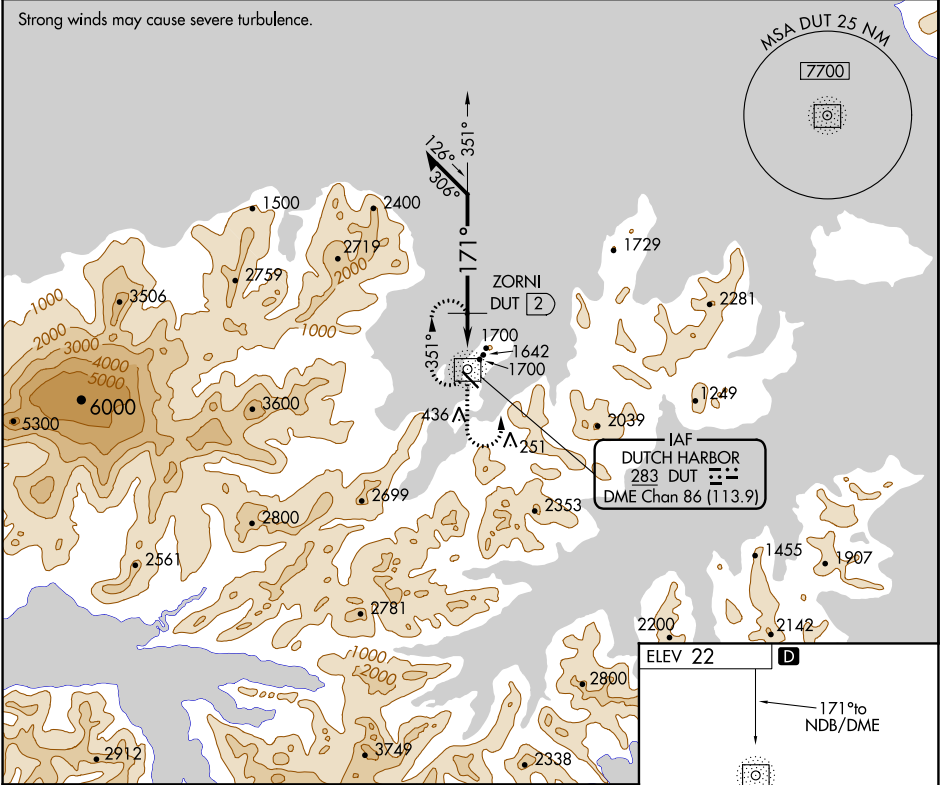


NDB/DME DUT <b>283</b>	APP CRS <b>171°</b>	Rwy Idg TDZE Apt Elev <b>N/A</b> <b>N/A</b> <b>22</b>	NDB-A UNALASKA (DUT) (PADU)
Chan <b>86 (113.9)</b>			

**⚠** Circling NA northeast of Rwy 12-30. Procedure NA at night. Helicopter visibility reduction below 1 SM NA. When local altimeter setting not received, use Akutan altimeter setting and increase all MDAs 100 feet. Descend to 6000 in holding pattern.

**⚠** MISSED APPROACH: Climb to 3000 on DUT NDB/DME bearing 171° then climbing left turn to 4300 direct DUT NDB/DME and hold.

AWOS-3P <b>125.8</b>	ANCHORAGE CENTER <b>121.4</b>	CTAF <b>122.6 0 *</b>
-------------------------	----------------------------------	--------------------------



Remain within 10 NM

DUT NDB/DME 6000

351°

171°

ZORNI DUT 2

\* 2900

2 NM

3000

4300

DUT

DUT 171°

\* 3000 when using Akutan altimeter setting.

CATEGORY	A	B	C	D
<b>CIRCLING</b>	2900-1¼ 2878 (2900-1¼)	2900-1½ 2878 (2900-1½)	2900-3	2878 (2900-3)
ZORNI FIX MINIMUMS (DME REQUIRED)				
<b>CIRCLING</b>	2200-1¼ 2178 (2200-1¼)	2200-1½ 2178 (2200-1½)	2320-3 2298 (2300-3)	2500-3 2478 (2500-3)

ELEV 22

171° to NDB/DME

351°

4500 x 100

MRL Rwy 13-31 0

REIL Rws 13 and 31 0