

WAAS CH 78241 W32A	APP CRS 318°	Rwy Idg 4099 TDZE 24 Apt Elev 24
--	------------------------	---

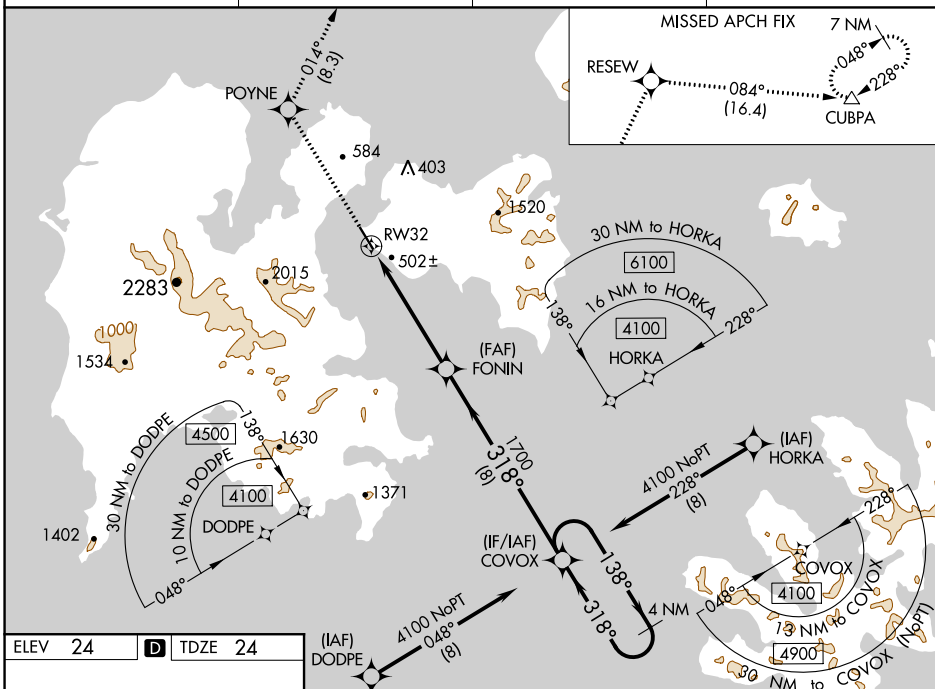
RNAV (GPS) RWY 32

SAND POINT (SDP) (PASD)

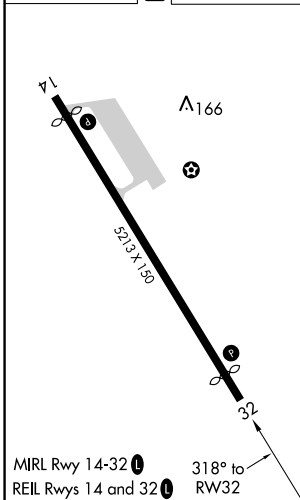
T For uncompensated Baro-VNAV systems, LNAV/VNAV NA below
A -20°C (-4°F) or above 54°C (130°F). When local altimeter setting not
 received, procedure NA. Circling NA northeast of Rwy 14-32.
 DME/DME RNP-0.3 NA.

MISSED APPROACH: Climb to 7000 direct POYNE and on track 014° to RESEW and on track 084° to CUBPA and hold, continue climb-in-hold to 7000.

AWOS-3P 134.85	ANCHORAGE CENTER 125.35 346.3	CLNC DEL 122.3 (CTAF) 0	UNICOM 122.8
--------------------------	---	-----------------------------------	------------------------



ELEV 24	D	TDZE 24
---------	----------	---------



7000 ↑	POYNE ✱	tr 014° ✱	RESEW ✱	tr 084° ✱	CUBPA △	VGS1 and RNAV glidepath not coincident (VGS1 Angle 3.60/TCH 36).			
<p>*LNAV only</p> <p>FONIN 1700</p> <p>1700</p> <p>318°</p> <p>138°</p> <p>4100</p> <p>318°</p> <p>COVOX</p> <p>4 NM Holding Pattern</p> <p>GS 3.00° TCH 36</p>									
CATEGORY		A		B		C		D	
LPV	DA			566-1½		542 (600-1½)			
LNAV/ VNAV	DA			859-2½		835 (900-2½)			
LNAV	MDA	760-1		736 (800-1)		760-2		736 (800-2)	
C CIRCLING		760-1		736 (800-1)		1520-3 1496 (1500-3)		NA	