

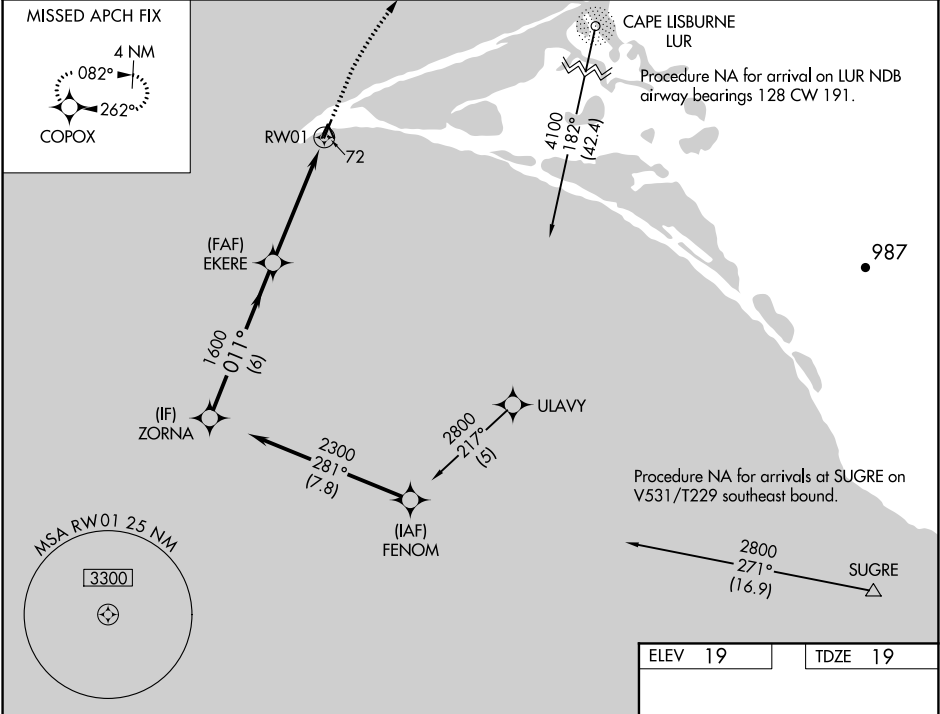
WAAS CH 82434 W01A	APP CRS 011°	Rwy Idg 3992 TDZE 19 Apt Elev 19
--	------------------------	---

RNAV (GPS) RWY 1

POINT HOPE (PHO) (PAPO)

<div><div>NA</div><div>For uncompensated Baro-VNAV systems, LNAV/VNAV NA below -20°C (-4°F) or above 54°C (130°F). When local altimeter setting not received, procedure NA. DME/DME RNP-0.3 NA. Helicopter visibility reduction below ¾ SM NA.</div></div>	MISSED APPROACH: Climb to 800 then climbing right turn to 3300 direct COPOX and hold.
--	---

AWOS-3P 118.325	ANCHORAGE CENTER 119.65 363.25	KOTZEBUE RADIO 122.25	CTAF 122.8 0
---------------------------	--	---------------------------------	------------------------



VGSI and RNAV glidepath not coincident (VGSI Angle 3.00/TCH 25).				
ZORNA				
2300	011°	1600	800	3300 COPOX
GP 3.00° TCH 40		*0.9 NM to RW01		
6 NM		3.9 NM	0.9	
CATEGORY	A	B	C	D
LPV DA	269-1 250 (300-1)			
LNAV/VNAV DA	269-1 250 (300-1)			
LNAV MDA	340-1 321 (400-1)			
CIRCLING	380-1 361 (400-1)	480-1 461 (500-1)	480-1½ 461 (500-1½)	580-2 561 (600-2)

