

WAAS CH 82135 W34A	APP CRS 344°	Rwy Idg 4500 TDZE 29 Apt Elev 29
--	------------------------	---

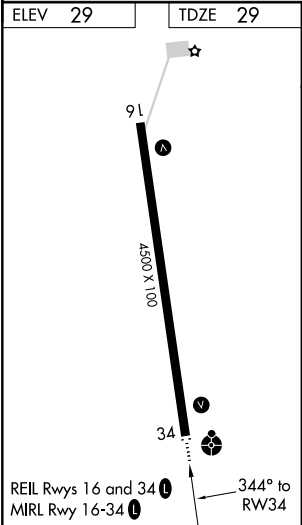
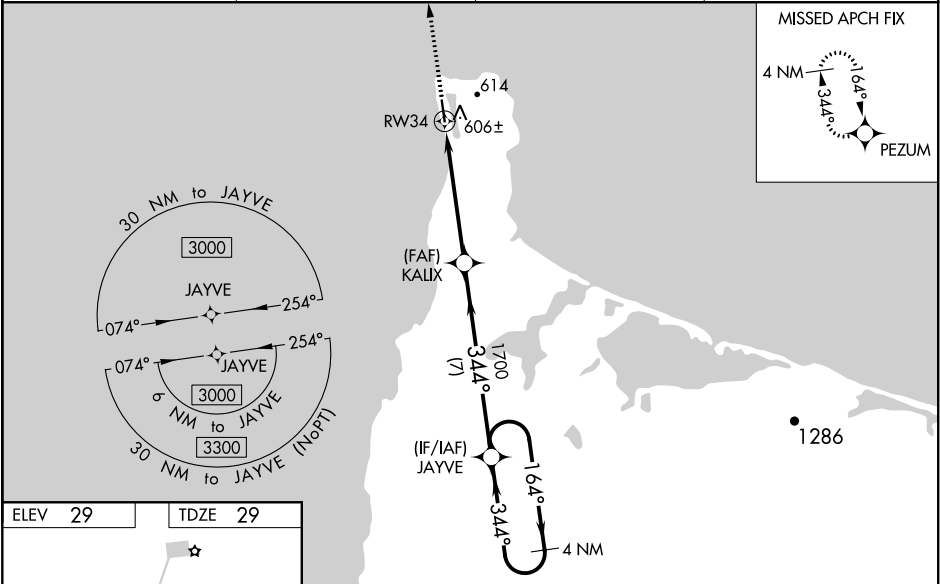
RNAV (GPS) RWY 34
GAMBELL (GAM)(PAGM)

Baro-VNAV and VDP NA when using Savoonga altimeter setting. For uncompensated Baro-VNAV systems, LNAV/VNAV NA below -20°C (-4°F) or above 54°C (130°F). Circling NA NE of Rwy 16-34. DME/DME RNP-0.3 NA. When local altimeter setting not received, use Savoonga altimeter setting and increase all DA 82 feet, increase LPV all Cats visibility ¼ mile, and LNAV/VNAV all Cats visibility by 1 mile; increase all MDA 100 feet and LNAV visibility Cat B ¼ mile, Cat C and D ½ mile; increase Circling Cats B and C ¼ mile. For inop ODALS when using Savoonga altimeter setting increase LPV all Cats visibility ⅓ mile. For inop ODALS increase LPV all Cats visibility ⅓ mile. Inop table does not apply to LNAV/VNAV all Cats, and LNAV Cats C and D. When using Savoonga altimeter setting inop table does not apply to LNAV/VNAV all Cats, and LNAV Cats C and D.

ODALS

MISSED APPROACH:
Climb to 3000
direct PEZUM
and hold.

AWOS-3P 125.9	ANCHORAGE CENTER 132.2 281.4	NOME RADIO 122.0	CTAF 122.7
-------------------------	--	----------------------------	----------------------



<div>3000</div> <div>↑</div>		<div>PEZUM</div> <div></div>		<div>JAYVE</div> <div>4 NM Holding Pattern</div>	
*LNAV only.		<div>*2.8 NM to RW34</div> <div></div>		<div>KALIX</div> <div>1700</div>	
<div>RW34</div> <div></div>		<div>1700</div> <div></div>		<div>344°</div> <div></div>	
<div>2.8 NM</div>		<div>2.3 NM</div>		<div>7 NM</div>	
<div>GP 3.00°</div> <div>TCH 39</div>				<div>164°</div> <div>344°</div> <div>3000</div>	
CATEGORY		A		B	
LPV DA		279-¾		250 (300-¾)	
LNAV/VNAV DA		866-3		837 (900-3)	
LNAV MDA		960-1 931 (1000-1)		960-2½ 931 (1000-2½)	
CIRCLING		960-1¼ 931 (1000-1¼)		960-2¾ 931 (1000-2¾)	
				960-3 931 (1000-3)	

AK, 31 DEC 2020 to 25 FEB 2021

AK, 31 DEC 2020 to 25 FEB 2021