

APP CRS
230°

Rwy Idg
4400

TDZE
58

Apt Elev
59

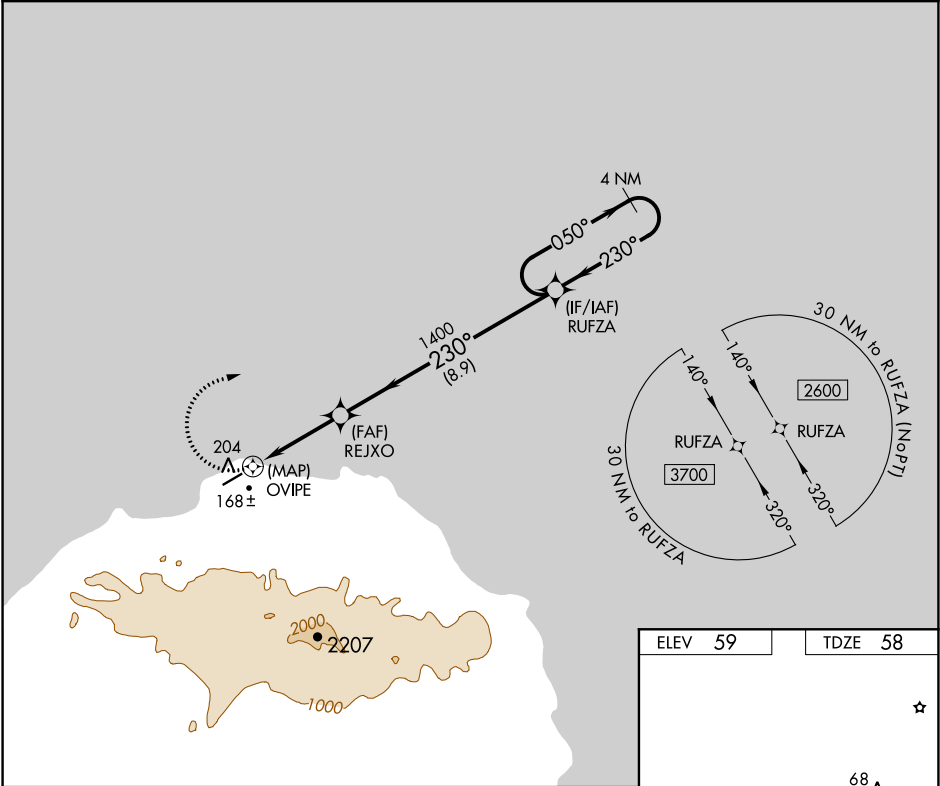
RNAV (GPS) RWY 23

SAVOONGA (SVA) (PASA)

DME/DME RNP-0.3 NA. When local altimeter setting not received, use Gambell altimeter setting and increase all MDA 100 feet, and increase LNAV visibility Cat C and D ¼ mile and Circling Cat C visibility ½ mile. Circling NA southeast of Rwy 5-23. VDP NA with Gambell altimeter setting.

MISSED APPROACH: Climbing right turn to 2600 direct RUFZA and hold.

AWOS-3P 121.3	ANCHORAGE CENTER 132.2 281.4	NOME RADIO 122.3	CTAF 122.7
------------------	---------------------------------	---------------------	---------------



2600

RUFZA

VGSI and descent angles not coincident (VGSI Angle 3.00/TCH 24).

4 NM Holding Pattern

REJXO

RUFZA

0.9 NM to OVIPE

3.00° TCH 39

1400

230°

050°

2600

0.5

0.9 NM

2.7 NM

8.9 NM

CATEGORY	A	B	C	D
LNAV MDA	520-1	462 (500-1)	520-1⅓	462 (500-1⅓)
CIRCLING	520-1	461 (500-1)	520-1½	620-2
			461 (500-1½)	561 (600-2)

ELEV 59

TDZE 58

68

4400 X 100

23

MIRL Rwy 5-23