

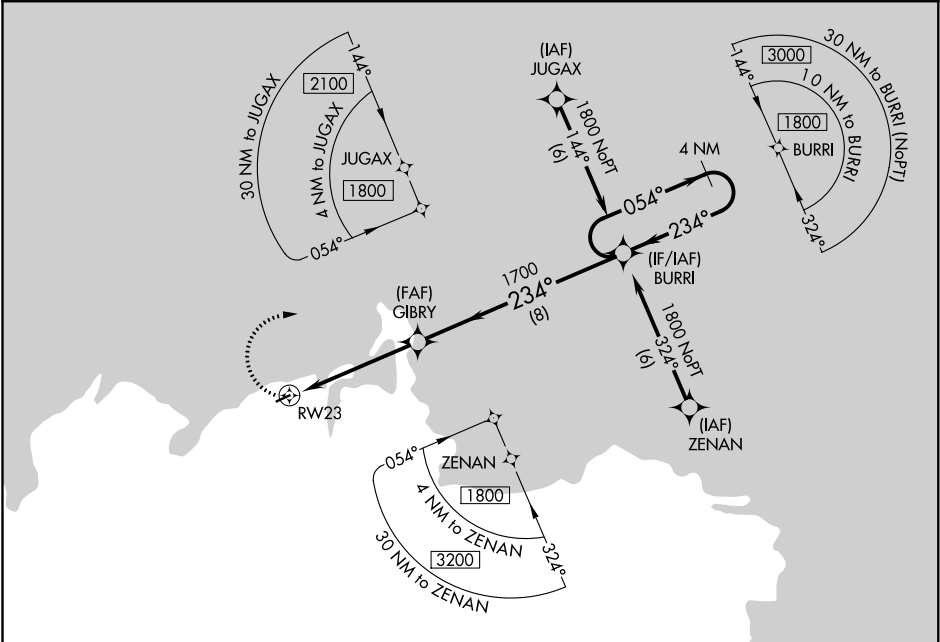
APP CRS	Rwy Idg	3001
234°	TDZE	53
	Apt Elev	53

RNAV (GPS) RWY 23

MEKORYUK (MYU) (PAMY)

<div><div><div></div><div></div></div></div>	DME/DME RNP-0.3 NA.	MISSED APPROACH: Climbing right turn to 1800 direct BURRI and hold.
--	---------------------	---

AWOS-3P 123.9	ANCHORAGE CENTER 124.5 372.0	KENAI RADIO 122.0	CTAF 122.9 0
------------------	---------------------------------	----------------------	-----------------



<div><div><div><div><div>1800</div><div>BURRI</div></div><div>VGSI and descent angle not coincident (VGSI Angle 3.00/ TCH 29).</div><div><div>GIBRY</div><div>BURRI</div></div><div>4 NM Holding Pattern</div></div><div><div><div>1.6 NM to RW23</div><div>≤3.04° TCH 38</div></div><div><div>1700</div><div>234°</div><div>054°</div><div>1800</div></div></div><div><div>1.6</div><div>3.4 NM</div><div>8 NM</div></div></div></div>					
CATEGORY	A		B	C	D
LNVA MDA	600-1 547 (600-1)		600-1½ 547 (600-1½)	600-1¾ 547 (600-1¾)	600-1¾ 547 (600-1¾)
CIRCLING	600-1 547 (600-1)		600-1½ 547 (600-1½)	720-2¼ 667 (700-2¼)	720-2¼ 667 (700-2¼)

