

WAAS
CH **65725**
W31A

APP CRS
316°

Rwy Idg **3300**
TDZE **20**
Apt Elev **20**

RNAV (GPS) RWY 31
HOOPER BAY (HPB) (PAHP)

RNP APCH.

▼

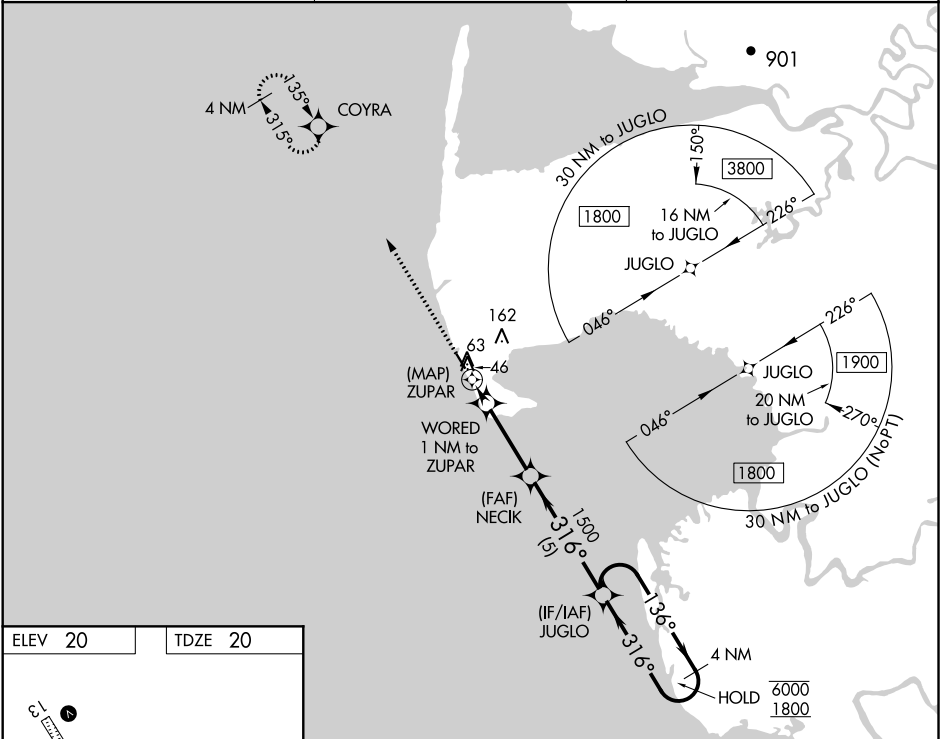
Rwy 31 helicopter visibility reduction below 1 SM NA.
Straight-in and Circling Rwy 31 NA at night.

MISSED APPROACH:
Climb to 1800 direct
COYRA and hold.

AWOS-3P
135.1

KENAI RADIO
122.4

CTAF
123.0



ELEV 20

TDZE 20

1800 COYRA

VGSI and descent angles not coincident
(VGSI Angle 3.00/TCH 28).

NECK

WORED 1 NM to ZUPAR

ZUPAR

520

1500

JUGLO

4 NM Holding Pattern

136° 6000

316° 1800

0.5

1 NM

3 NM

5 NM

CATEGORY	A	B	C	D
LP MDA	380-1 360 (400-1)			
LNAV MDA	380-1 360 (400-1)			
CIRCLING	420-1 400 (400-1)	480-1 460 (500-1)	480-1½ 460 (500-1½)	580-2 560 (600-2)

REIL Rwys 13 and 31
MIRL Rwy 13-31

107°