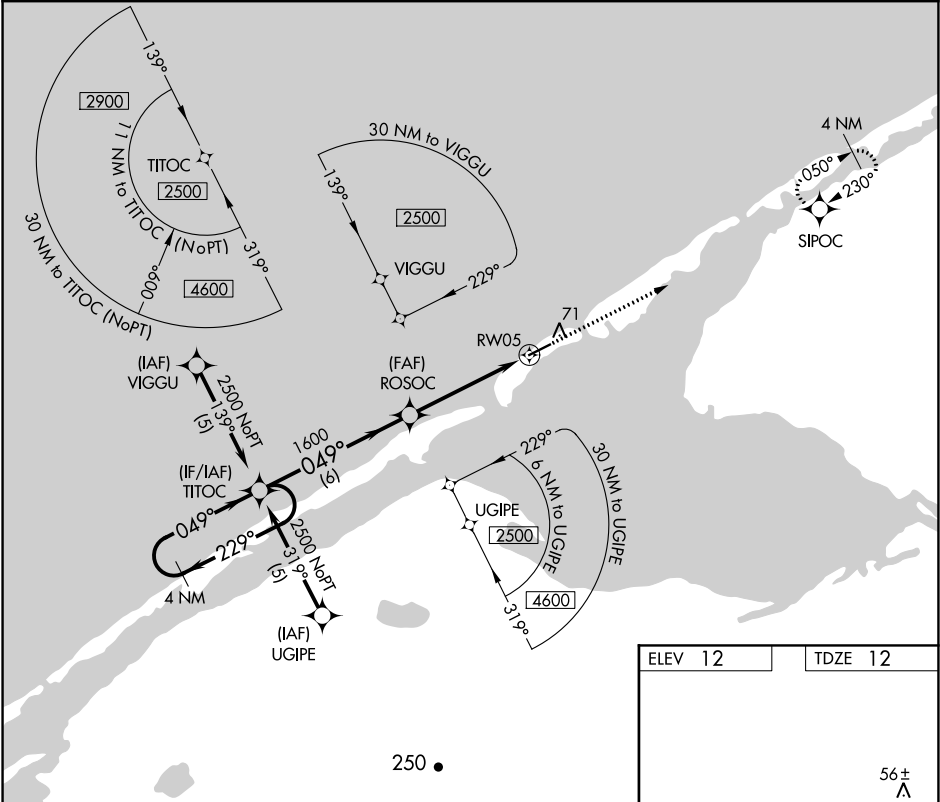


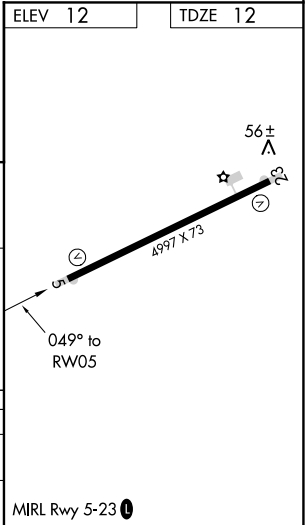
APP CRS 049°	Rwy Idg TDZE 12 Apt Elev 12
------------------------	---

RNAV (GPS) RWY 5
SHISHMAREF (SHH) (PASH)

DME/DME RNP-0.3 NA.		MISSED APPROACH: Climb to 2500 direct SIPOC and hold.	
AWOS-3P 121.1	ANCHORAGE CENTER 119.2 263.0	NOME RADIO 122.4	CTAF 123.0



4 NM Holding Pattern		VGSI and descent angles not coincident (VGSI Angle 3.00/TCH 25).		2500	SIPOC
TITOC		ROSOC		0.8 NM to RW05	
2500		1600		RW05	
229°		049°		3.04° TCH 45	
049°		049°		6 NM	
2500		1600		4 NM	
049°		049°		0.8	
CATEGORY	A	B	C	D	
LNVA MDA	300-1		288 (300-1)		
CIRCLING	420-1 408 (500-1)	480-1 468 (500-1)	480-1½ 468 (500-1½)	580-2 568 (600-2)	



AK, 31 DEC 2020 to 25 FEB 2021

AK, 31 DEC 2020 to 25 FEB 2021